

# Allocation Sharing and Accountability Measures for the Gulf of Mexico Migratory Group of King Mackerel

RP



## Options Paper Draft Amendment 29 to the Fishery Management Plan for the Coastal Migratory Pelagics Fishery of the Gulf of Mexico and Atlantic Region

August 2016



*This is a publication of the Gulf of Mexico Fishery Management Council Pursuant to National Oceanic and Atmospheric Administration Award No. NA15NMF4410011.*

This page intentionally blank

# ENVIRONMENTAL ASSESSMENT COVER SHEET

## ALLOCATION SHARING AND ACCOUNTABILITY MEASURES FOR THE GULF OF MEXICO MIGRATORY GROUP OF KING MACKEREL

Draft Amendment 29 to Fishery Management Plan for Coastal Migratory Pelagic Resources in the Gulf of Mexico and South Atlantic Region addressing modifications to the management of king mackerel within the coastal migratory pelagic zones.

---

### Type of Action

Administrative  
 Draft

Legislative  
 Final

### Responsible Agencies and Contact Persons

Gulf of Mexico Fishery Management Council  
2203 North Lois Avenue, Suite 1100  
Tampa, Florida 33607  
Ryan Rindone ([ryan.rindone@gulfcouncil.org](mailto:ryan.rindone@gulfcouncil.org))

813-348-1630  
813-348-1711 (fax)  
[gulfcouncil@gulfcouncil.org](mailto:gulfcouncil@gulfcouncil.org)  
<http://www.gulfcouncil.org>

South Atlantic Fishery Management Council  
4055 Faber Place, Suite 201  
North Charleston, South Carolina 29405  
Kari MacLauchlin ([kari.maclauchlin@safmc.net](mailto:kari.maclauchlin@safmc.net))

1-866-723-6210  
843-769-4520 (fax)  
[www.safmc.net](http://www.safmc.net)

National Marine Fisheries Service (Lead Agency)  
Southeast Regional Office  
263 13<sup>th</sup> Avenue South  
St. Petersburg, Florida 33701  
Susan Gerhart ([susan.gerhart@noaa.gov](mailto:susan.gerhart@noaa.gov))  
Karla Gore ([karla.gore@noaa.gov](mailto:karla.gore@noaa.gov))

727-824-5305  
727-824-5308 (fax)  
<http://sero.nmfs.noaa.gov>

## ABBREVIATIONS USED IN THIS DOCUMENT

ABC	acceptable biological catch
ACL	annual catch limit
ACT	annual catch target
ALS	Accumulated Landings System
AMs	accountability measures
AP	Advisory Panel
APA	Administrative Procedures Act
ASMFC	Atlantic States Marine Fisheries Commission
CFDBS	Commercial Fisheries Data Base System
CLM	commercial landings monitoring system
CMP	coastal migratory pelagics
Council	Gulf of Mexico and South Atlantic Fishery Management Councils
CS	consumer surplus
CZMA	Coastal Zone Management Act
DQA	Data Quality Act
EA	environmental assessment
EEZ	exclusive economic zone
EFH	essential fish habitat
EIS	environmental impact statement
EJ	environmental justice
ESA	Endangered Species Act
F	instantaneous rate of fishing mortality
FLEC	Florida east coast
FMP	Fishery Management Plan
Gulf	Gulf of Mexico
Gulf Council	Gulf of Mexico Fishery Management Council
GMFMC	Gulf of Mexico Fishery Management Council
GSMFC	Gulf States Marine Fisheries Commission
HAPC	habitat area of particular concern
Magnuson-Stevens Act	Magnuson-Stevens Fishery Conservation and Management Act
MFMT	maximum fishing mortality threshold
Mid-Atlantic Council	Mid-Atlantic Fishery Management Council
MMPA	Marine Mammal Protection Act
mp	million pounds
MRFSS	Marine Recreational Fisheries Survey and Statistics
MRIP	Marine Recreational Information Program
MSST	minimum stock size threshold
MSY	maximum sustainable yield
NEFSC	New England Fisheries Science Center
NEPA	National Environmental Policy Act
nm	nautical mile
NMFS	National Marine Fisheries Service
NOAA	National Oceanic and Atmospheric Administration
NOR	net operating revenue

OFL	overfishing level
OY	optimum yield
PS	producer surplus
RFA	Regulatory Flexibility Act of 1980
RIR	Regulatory Impact Review
RQ	regional quotient
SAFMC	South Atlantic Fishery Management Council
SBA	Small Business Administration
SCS	small coastal sharks
Secretary	Secretary of Commerce
SEDAR	Southeast Data, Assessment, and Review
SEFSC	Southeast Fisheries Science Center
SERO	Southeast Regional Office
South Atlantic Council	South Atlantic Fishery Management Council
SSB	spawning stock biomass
SSC	Scientific and Statistical Committee
SPR	spawning potential ratio
SRHS	Southeast Regional Headboat Survey
TLR	trip limit reduction
TPWD	Texas Parks and Wildlife Department
USCG	United States Coast Guard
VOC	volatile organic compound
ww	whole weight

# TABLE OF CONTENTS

Environmental Assessment Cover Sheet .....	i
Abbreviations Used In This Document.....	ii
Table of Contents .....	iv
List of Tables .....	v
List of Figures .....	vi
Chapter 1. Introduction .....	1
1.1 Background .....	1
1.2 Purpose and Need.....	3
1.3 History of Management.....	3
Chapter 2. Proposed Management Alternatives.....	5
2.1 Action 1 – Gulf Migratory Group King Mackerel Quota Sharing .....	5
2.2 Action 2 – Adjust the Recreational Accountability Measure for Gulf Migratory Group King Mackerel.....	12
Chapter 3. References to be updated.....	14
Appendix A. Summaries of Public Comments Received .....	22
Gulf of Mexico Scoping Workshop Comments.....	22
Appendix B. Economic Analysis of Reallocation Scenarios for Gulf Migratory Group King Mackerel .....	25
Appendix B-A. Commercial Sector Analysis.....	28
Overview.....	28
Conceptual Model.....	28
Data.....	30
Empirical model.....	31
Results.....	34
Appendix B-B. Recreational Sector Analysis.....	35
Potential Longer Term Effects of Reallocation Policies.....	35
Appendix B-C. Effects on recreational CPUE of reallocation of the recreational of Gulf of Mexico king mackerel under-age to commercial sector .....	37
Comparison between the Stock Assessment Status Quo and the Reallocation Scenarios....	37
Comparison between the Current Underage and the Reallocation Scenarios.....	40
Appendix B References .....	40

## LIST OF TABLES

- Table 2.1.1.** Proportion of sector ACLs landed and proportion of total ACL landed for Gulf king mackerel, including those landings attributed to the former Florida East Coast Zone (FLEC). .... 8
- Table 2.1.2.** Resultant allocations based on options presented in Alternative X of Action 1. .... 10

## LIST OF FIGURES

**Figure 1.1.1.** Boundary between Atlantic and Gulf migratory groups of king mackerel, as proposed by SEDAR 38 (2014) and Amendment 26 to the CMP FMP (GMFMC and SAFMC 2016). ..... 2

**Figure 2.1.1.** Trends in Gulf king mackerel landings by sector for the 2000/01 through the 2014/15 fishing seasons. Landings are in pounds..... 9



# CHAPTER 1. INTRODUCTION

## What Actions Are Being Proposed?

Options in Amendment 29 to Fishery Management Plan (FMP) for Coastal Migratory Pelagic Resources (CMP) in the Gulf of Mexico and South Atlantic Region (Amendment 29) address issues associated with sector allocation sharing and recreational accountability measures for the Gulf of Mexico (Gulf) migratory group of king mackerel.

## Who Is Proposing the Action?

The Gulf and South Atlantic Fishery Management Councils (Councils) are proposing the actions. The Councils develop the regulations and submit them to the National Marine Fisheries Service (NMFS) who ultimately approves, disapproves, or partially approves the actions in the amendment on behalf of the Secretary of Commerce. NMFS is an agency in the National Oceanic and Atmospheric Administration.

## Why Are The Councils Considering Action?

In 2014, a stock assessment of the Atlantic and Gulf migratory groups of king mackerel was completed (SEDAR 38), and indicated that neither migratory group was overfished or experiencing overfishing.

Historically, the recreational sector in the Gulf has not landed its sector allocation of the king mackerel stock ACL (currently 68%), while the commercial sector has either met or exceeded its 32% allocation of the stock ACL. In an effort to manage Gulf king mackerel such that the maximum benefit of the resource is harvested without harming the population, the Councils have decided to evaluate sharing of allocation between the recreational and commercial sectors of Gulf king mackerel.

## 1.1 Background

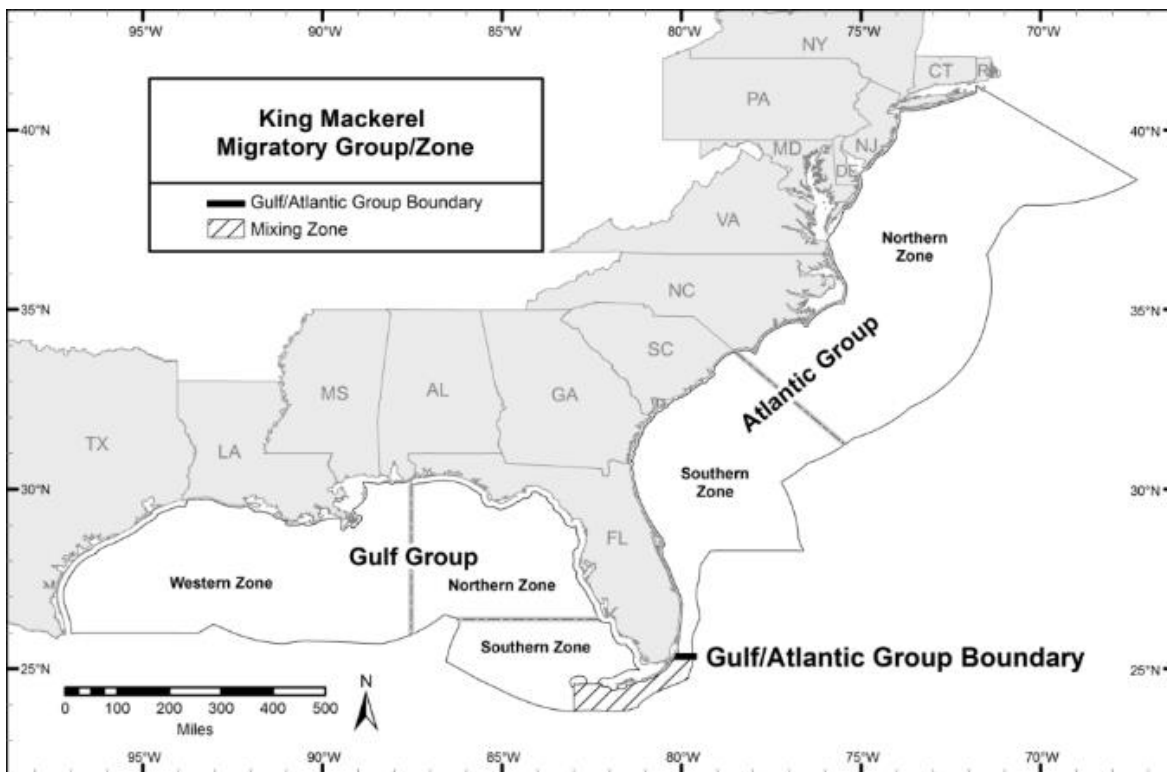
Initially, the CMP FMP (GMFMC/SAFMC 1982) treated king mackerel as one stock. The present management regime in the FMP recognizes two migratory groups: the Gulf migratory group and the Atlantic migratory group. Each migratory group is primarily managed by the respective Council. Gulf and Atlantic migratory groups of king mackerel are also divided into zones and/or subzones for management purposes. This amendment considers changes to management measures for the Gulf migratory group of king mackerel. For the purposes of this amendment, the Gulf migratory group will be referred to as *Gulf king mackerel* and the Atlantic

### Who's Who?

- ***Gulf of Mexico and South Atlantic Fishery Management Councils*** – Engage in a process to determine a range of actions and alternatives, and recommends action to the National Marine Fisheries Service.
- ***National Marine Fisheries Service and Council staffs*** – Develop alternatives based on guidance from the Council, and analyze the environmental impacts of those alternatives.
- ***Secretary of Commerce*** – Will approve, disapprove, or partially approve the amendment as recommended by the Councils.

migratory group will be referred to as *Atlantic king mackerel*. Changes to sector allocations for Atlantic group king mackerel are not being considered in this document because the South Atlantic Council has not identified such a change to be necessary at this time.

The two migratory groups were historically thought to mix seasonally off the east coast of Florida and in Monroe County, Florida. The SEDAR 38 stock assessment revised this winter mixing zone to be in the exclusive economic zone south of US Highway 1 in the Florida Keys from November 1 – March 31. The Councils approved an amendment to the CMP FMP (Amendment 26) to revise the stock boundary between the Councils to the Dade/Monroe County line, with the Gulf of Mexico Fishery Management Council (Gulf Council) managing the mixing zone year-round (Amendment 26 to the CMP FMP will be transmitted for Secretarial review in late spring, 2016). For management and assessment purposes, the boundary between the migratory groups of king mackerel will be specified at the Dade/Monroe County line (Figure 1.1.1).



**Figure 1.1.1.** Boundary between Atlantic and Gulf migratory groups of king mackerel, as proposed by SEDAR 38 (2014) and Amendment 26 to the CMP FMP (GMFMC and SAFMC 2016).

The Councils are considering modifying the sector allocations for Gulf king mackerel. Over the past decade, the commercial sector has regularly met or exceeded the commercial ACL while the recreational sector has landed low proportions of the recreational ACL. At the March and November 2015 Gulf CMP Advisory Panel (Gulf AP) meetings, members recommended that the Councils abstain from reallocating any king mackerel from the recreational sector to the commercial sector. The Gulf AP subsequently recommended an increase for the Gulf

recreational bag limit as a way to potentially increase utilization of the recreational ACL (preferred by the Councils in CMP Amendment 26). The Councils did not make any changes to the sector allocations in CMP Amendment 26; however, they did direct staff to begin an amendment to examine how to utilize underages of Gulf king mackerel ACL, along with any necessary changes to accountability measures (AMs).

## 1.2 Purpose and Need

### *Purpose for Action*

The purpose of this amendment is to consider changes to the recreational and commercial allocations for Gulf migratory group king mackerel and the recreational accountability measure.

### *Need for Action*

The need for this amendment is to achieve optimum yield while ensuring overfishing does not occur in the coastal migratory pelagics (CMP) fishery, thereby increasing social and economic benefits of the CMP fishery through sustainable and valuable harvest of king mackerel.

## 1.3 History of Management

The CMP FMP, with Environmental Impact Statement (EIS), was approved in 1982 and implemented by regulations effective in February 1983 (GMFMC/SAFMC 1982). The management unit includes king mackerel, Spanish mackerel, and cobia. The FMP treated king and Spanish mackerel as unit stocks in the Atlantic and Gulf. The following is a list of management changes relevant to this amendment. A full history of CMP management can be found in Amendment 18 to the CMP FMP (GMFMC and SAFMC 2011), and is incorporated here by reference.

**Amendment 1**, with EIS, implemented in September 1985, recognized separate Atlantic and Gulf migratory groups of king mackerel. The Gulf commercial allocation for king mackerel was divided into Eastern and Western Zones for the purpose of regional allocation, with 69% of the allocation provided to the Eastern Zone and 31% to the Western Zone.

**Amendment 5**, with environmental assessment (EA), implemented in August 1990, provided that the South Atlantic Council will be responsible for pre-season adjustments of total allowable catch and bag limits for the Atlantic migratory groups of mackerels while the Gulf Council will be responsible for Gulf migratory groups.

**Amendment 7**, with EA, implemented in November 1994, equally divided the Gulf commercial allocation in the Eastern Zone at the Dade-Monroe County line in Florida. The sub-allocation for the area from Monroe County through Western Florida was equally divided between commercial hook-and-line and net gear users.

**Amendment 8**, with EA, implemented in March 1998, provided the South Atlantic Council with authority to set vessel trip limits, closed seasons or areas, and gear restrictions for Gulf migratory group king mackerel in the North Area of the Eastern Zone (Dade/Monroe to Volusia/Flagler County lines); and modified the seasonal framework adjustment measures.

**Amendment 9**, with EA, implemented in April 2000, created north and south subzones on the Florida west coast and reallocated the commercial portion of the total allowable catch among the Gulf zones.

**Amendment 18**, with EA, implemented in January 2012, established ACLs and accountability measures for Gulf and Atlantic migratory groups of king mackerel. The ACLs for the Gulf and South Atlantic migratory groups of king mackerel were 10.8 million pounds (mp) and 10.46 mp, respectively.

**Amendment 20A**, with EA, implemented in July 2014, prohibited sale of recreationally caught king mackerel, with an exception for sale of fish caught on for-hire trips on dual-permitted vessels in the Gulf region, and an exception for sale of fish caught in state-permitted tournaments in both regions.

**Amendment 20B**, with EA, implemented in March 2015, revised Gulf king mackerel hook and line trip limits in the Florida West Coast zone Northern and Southern subzones and modified the Northern subzone fishing year; created a transit provision for areas closed to king mackerel; and established Northern and Southern zones with commercial quotas for Atlantic king mackerel.

**Amendment 23**, with EA, implemented in August 2014, was part of the joint Gulf and South Atlantic Dealer Reporting Amendment, and required CMP fishermen to sell to a federally permitted dealer.

**South Atlantic CMP Framework Action 2013** with EA, implemented in December 2014, modified king mackerel trip limits in the Gulf Florida East Coast subzone.

**Amendment 26**, with EA, approved by the Councils in March and April of 2016, modified the stock boundary between the Gulf and Atlantic migratory groups of king mackerel to be at the Dade/Monroe County Line in southeastern Florida, with the Gulf Council managing king mackerel to that line year-round. The ABC for Gulf king mackerel was increased. Commercial zone allocations of the commercial king mackerel ACL in the Gulf were changed as follows: Western Zone: 40%; Northern Zone: 18%; Southern Zone Handline: 21%; and Southern Zone Gillnet: 21%. Lastly, the recreational bag limit was increased from two fish per person per day to three fish per person per day. This amendment is in the process of being transmitted for Secretarial review.

## CHAPTER 2. PROPOSED MANAGEMENT ALTERNATIVES

### 2.1 Action 1 – Gulf Migratory Group King Mackerel Quota Sharing

**Alternative 1:** No Action – Do not establish a quota sharing system. Maintain the current recreational and commercial allocations for Gulf of Mexico migratory group king mackerel (68% recreational, 32% commercial).

**Alternative 2:** Conditionally transfer a certain percentage (*Options 2a-2d*) of the recreational allocation to the commercial allocation for each fishing year. If the recreational landings threshold is met (*Options 2e-2g*), in any fishing year, the amount of the allocation transferred to the commercial sector will be reduced by 50% for the following year. If the threshold is met for a second consecutive year, the recreational and commercial allocations will revert to 68% for the recreational sector and 32% for the commercial sector at the beginning of the next commercial fishing year (July 1). If the threshold is not met for a second consecutive year, then the recreational and commercial allocations will revert to the conditional quota transfer option chosen (*Options 2a-2d*).

*Conditional Quota Transfer (MUST CHOOSE ONE):*

**Option 2a:** Conditionally transfer 5% from the recreational allocation to the commercial allocation.

**Option 2b:** Conditionally transfer 10% from the recreational allocation to the commercial allocation.

**Option 2c:** Conditionally transfer 15% from the recreational allocation to the commercial allocation.

**Option 2d:** Conditionally transfer 20% from the recreational allocation to the commercial allocation.

*Recreational ACL Threshold (MUST CHOOSE ONE):*

**Option 2e:** Reduce or revert the sector allocation transfer if 80% of the recreational sector ACL is landed.

**Option 2f:** Reduce or revert the sector allocation transfer if 90% of the recreational sector ACL is landed.

**Option 2g:** Reduce or revert the sector allocation transfer if 100% of the recreational sector ACL is landed.

***IPT-Proposed Alternative X:*** Conditionally transfer a certain percentage (*Options Xa-Xd*) of the allocation to the commercial sector in the next fishing year, if the minimum recreational landings threshold is not met (*Options Xe-Xg*). If the commercial sector does not land at least 90% of its ACL, this transfer will not occur. Landings data from two years prior will be used to determine allocation transfers.

*Conditional Quota Transfer (MUST CHOOSE ONE):*

**Option Xa:** Conditionally transfer 5% from the stock allocation to the commercial allocation.

**Option Xb:** Conditionally transfer 10% from the stock allocation to the commercial allocation.

**Option Xc:** Conditionally transfer 15% from the stock allocation to the commercial allocation.

**Option Xd:** Conditionally transfer 20% from the stock allocation to the commercial allocation.

*Recreational ACL Minimum Threshold (MUST CHOOSE ONE), if the recreational sector landings are:*

**Option Xe:** less than 50% of its ACL.

**Option Xf:** less than 65% of its ACL.

**Option Xg:** less than 75% of its ACL.

*The IPT recommends replacing Alternative 2 with Alternative X, which achieves the same goals as Alternative 2. One difference is that the transfer in Alternative X largely relies on the recreational sector's landings, rather than the commercial sector's, to determine whether a transfer will occur. Another difference is the use of two year old data: under this circumstance, the landings data will be known and vetted prior to use in determining conditional transfers, as opposed to estimating MRIP waves under Alternative 2 (e.g., 2016 data will determine whether a transfer occurs in 2018).*

**Alternative 3:** ~~If the stock ACL is not met in a fishing year, establish a "credit" derived from the difference between the total pounds of king mackerel landed by both sectors and the stock ACL for that same fishing year. In the following fishing season, the credit (in pounds) would transfer to the ACL for the sector which met (within 10%) its ACL, from the ACL for the sector which was under its ACL (by more than 10%). If both sectors are under their ACLs, no credit will be established. The credit would only apply if a minimum percentage of the stock ACL was not harvested in a given fishing year (Options 3a-3c), and only a certain percentage of the unharvested ACL from the previous fishing year would make up the credit (Options 3d-3f). The credit would only be valid for a single fishing year.~~

~~*Remaining Stock ACL Threshold (MUST CHOOSE ONE):*~~

~~**Option 3a:** At least 15% of the stock ACL remains unharvested.~~

~~**Option 3b:** At least 20% of the stock ACL remains unharvested.~~

~~**Option 3c:** At least 25% of the stock ACL remains unharvested.~~

~~*Percentage of Remaining ACL to Transfer (MUST CHOOSE ONE):*~~

~~**Option 3d:** The credit will be equal to 20% of the unharvested stock ACL.~~

~~**Option 3e:** The credit will be equal to 30% of the unharvested stock ACL.~~

~~**Option 3f:** The credit will be equal to 40% of the unharvested stock ACL.~~

**Alternative 4:** If the stock ACL is not harvested in a fishing year, the Scientific and Statistical Committee (SSC) will be convened to consider increasing the acceptable biological catch (ABC) for the following fishing year only. If the SSC recommends increasing the ABC, the amount of the increase (in pounds) would be added to the ACL of the sector which harvested its ACL (within 10%) in the previous fishing year. Consideration of an ABC adjustment by the SSC would only be requested if a minimum percentage of the stock ACL was not harvested in a given

fishing season (*Options 4a-4c*). If one of Options 4a, 4b, or 4c is not chosen as preferred, and the stock ACL has not been landed, then the SSC will consider raising the ABC in any year when the stock ACL is not harvested:

*Remaining Stock ACL Threshold (CHOOSE ONE):*

**Option 4a:** At least 15% of the stock ACL remains unharvested.

**Option 4b:** At least 20% of the stock ACL remains unharvested.

**Option 4c:** At least 25% of the stock ACL remains unharvested.

*Note: The recreational fishing year is January – December and the commercial fishing year for most zone quotas is July – June, with the exception of the Gulf Northern Zone. Any quota transfer will be based on recreational landings through December of the previous year, and applied to the commercial allocation for that year’s fishing season. This will allow time to receive MRIP and other recreational landings before the start of the commercial season.*

**Alternative 5:** ~~Establish a sunset provision for any modifications in the sector quota sharing. After the predetermined time period, any modifications in sector quota sharing would revert back to the status quo sector allocations (68% recreational and 32% commercial).~~

~~**Option 5a:** Sunset any change in sector allocations after a five year period (2017-2021).~~

~~**Option 5b:** Sunset any change in sector allocations after a ten year period (2017-2026).~~

~~**Option 5c:** Sunset any change in sector allocations after a fifteen year period (2017-2031).~~

*The IPT recommends removing Alternative 5, since there are already safeguards built in to the other Alternatives to conditionally end or prevent allocation sharing.*

### **Discussion:**

Over the past ten years, the commercial sector of the Gulf of Mexico (Gulf) king mackerel fishery has consistently landed the commercial annual catch limit (ACL) while the recreational sector has not landed the recreational ACL. That is why the council and NMFS do not consider transferring allocation from the commercial sector to the recreational sector to be a reasonable alternative. Therefore, no alternatives considering transferring allocation from the commercial sector to the recreational sector will be considered any further in this analysis.

Recent landings of Gulf king mackerel are shown in Table 2.1.1 and Figure 2.1.1. The commercial fishing year for king mackerel is July 1 – June 30 for the Gulf Western and Southern Zones, October 1 – September 30 for the Gulf Northern Zone, and the day after Martin Luther King Jr. Day until June 30 for the Gulf Southern Zone gillnet component.

**Table 2.1.1.** Proportion of sector ACLs landed and proportion of total ACL landed for Gulf king mackerel, including those landings attributed to the former Florida East Coast Zone (FLEC). The FLEC landings are included here since there is not a recreational allocation specifically for the former FLEC Zone. Landings are reported as landed weight (gutted and whole combined).

Fishing Year	Total TAC/ACL	Comm Sector ACL	Comm Landings	Rec Sector ACL	Rec Landings	% of Sector ACL Landed		% of Total ACL Landed
						Comm <sup>1</sup>	Rec <sup>2</sup>	
2001/02	10.2 mp	3.264 mp	2.902 mp	6.936 mp	3.669 mp	88.9%	52.9%	64.7%
2002/03	10.2 mp	3.264 mp	3.186 mp	6.936 mp	2.816 mp	97.6%	40.6%	59.3%
2003/04	10.2 mp	3.264 mp	3.094 mp	6.936 mp	3.211 mp	94.8%	46.3%	62.7%
2004/05	10.2 mp	3.264 mp	3.215 mp	6.936 mp	2.532 mp	98.5%	36.5%	56.4%
2005/06	10.2 mp	3.264 mp	2.983 mp	6.936 mp	2.996 mp	91.4%	43.2%	58.9%
2006/07	10.8 mp	3.456 mp	3.231 mp	7.344 mp	3.305 mp	93.5%	45.0%	60.5%
2007/08	10.8 mp	3.456 mp	3.459 mp	7.344 mp	2.629 mp	100.1%	35.8%	56.3%
2008/09	10.8 mp	3.456 mp	3.833 mp	7.344 mp	2.350 mp	110.9%	32.0%	57.6%
2009/10	10.8 mp	3.456 mp	3.674 mp	7.344 mp	3.525 mp	106.3%	48.0%	68.0%
2010/11	10.8 mp	3.456 mp	3.522 mp	7.344 mp	2.181 mp	101.9%	29.7%	53.0%
2011/12	10.8 mp	3.456 mp	3.428 mp	7.344 mp	2.438 mp	99.2%	33.2%	54.3%
2012/13	10.8 mp	3.456 mp	3.539 mp	7.344 mp	2.710 mp	102.4%	36.9%	57.9%
2013/14	10.8 mp	3.456 mp	3.055 mp	7.344 mp	2.916 mp	88.4%	39.7%	55.3%
2014/15 <sup>3</sup>	10.8 mp	3.456 mp	3.591 mp <sup>3</sup>	7.344 mp	4.576 mp	103.9%	62.3%	75.6%

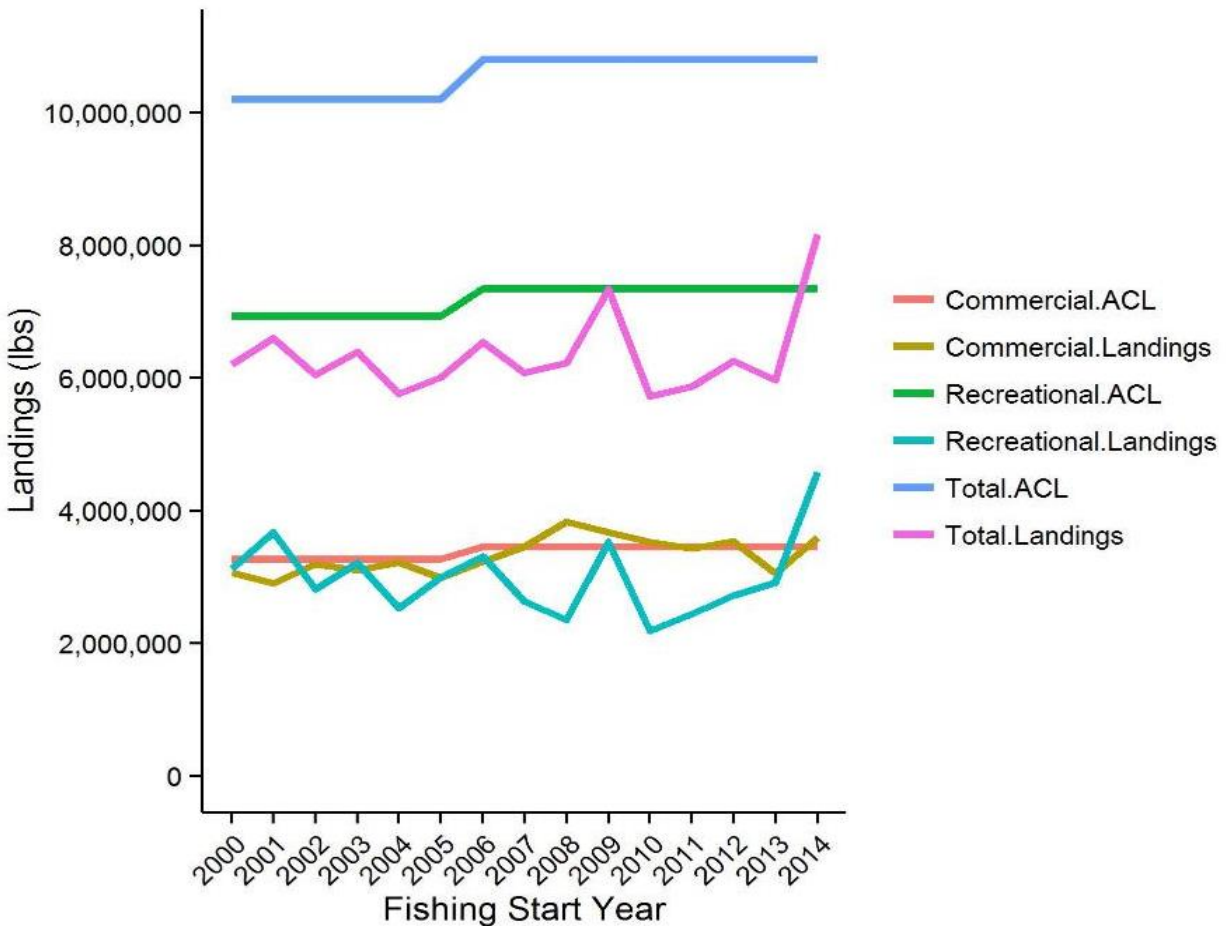
<sup>1</sup>Commercial allocation = 32%      <sup>2</sup>Recreational allocation = 68%

<sup>3</sup> Commercial landings are incomplete for 2014/15

Source: SERO



## Gulf King Mackerel Landings and ACLs: 2000-2014



**Figure 2.1.1.** Trends in Gulf king mackerel landings by sector for the 2000/01 through the 2014/15 fishing seasons. Landings are in pounds.

**Alternative 1** would maintain the current recreational and commercial sector allocations of 68% and 32% respectively, which were established in the original Fishery Management Plan (FMP) for Coastal Migratory Pelagic Resources (CMP) in February 1983. Over the last decade, the recreational sector has not landed its sector ACL, while the commercial sector has typically met or exceeded its ACL. Closures for the commercial sector are facilitated by the National Marine Fisheries Service (NMFS), which provides notice to fishermen prior to closing each commercial zone to fishing when that zone’s quota is projected to be reached. This trend would be expected to continue, at least in the short term under **Alternative 1**.

***IPT-Proposed Alternative X*** would conditionally transfer a certain percentage (*Options Xa-Xd*) of the allocation to the commercial sector in the next fishing year, if the minimum recreational landings threshold is not met (*Options Xe-Xg*). If the commercial sector does not land at least 90% of its ACL, this transfer will not occur. The Gulf of Mexico (Gulf) and South Atlantic Fishery Management Councils (Councils) proposed four options for transferring quota to the commercial sector: 5% (**Option Xa**), 10% (**Option Xb**), 15% (**Option Xc**), and 20% (**Option Xd**). The resultant sector allocations for each option under ***IPT-Proposed Alternative X*** are

shown in Table 2.1.2. The proposed minimum recreational ACL landings thresholds would cancel any allocation transfer if at least 50% (**Option Xe**), 65% (**Option Xf**), or 75% (**Option Xg**) of the recreational sector ACL is landed. In order for ***IPT-Proposed Alternative X*** to function as designed, the Councils must choose one option from **Options Xa – Xd** and one option from **Options Xe – Xg**.

**Table 2.1.2.** Resultant allocations based on options presented in Alternative X of Action 1.

<i><b>IPT-Proposed Alternative X</b></i>	<b>Commercial Allocation</b>	<b>Recreational Allocation</b>
<b>Option Xa</b>	37%	63%
<b>Option Xb</b>	42%	58%
<b>Option Xc</b>	47%	53%
<b>Option Xd</b>	52%	48%

Landings data from two years prior will be used to determine allocation transfers. For example, whether any allocation sharing would occur in 2018-2019 fishing year would be determined using landings from the 2016-2017 fishing year. Reasons for using two years prior include the delay in final landings data after the end of the fishing year and the difference in fishing year among the commercial fishing zones. First, final recreational landings are not complete until at least April of the following calendar year. Second, the commercial landings are also not available until April of the following calendar year because final data from states are not submitted until after all fishing seasons are complete. Finally, not all commercial zones in the Gulf are on the same fishing year.

**Alternative 4** states that if the stock ACL is not met in a fishing year, the Gulf Council will convene the SSC to consider increasing the ABC for the following fishing year only. If the SSC recommends increasing the ABC, the amount of the increase would be added to the ACL of the sector which harvested its ACL in the previous fishing year. The Council would only request consideration of an ABC adjustment by the SSC if a minimum percentage of the stock ACL was not harvested in a given fishing season: at least 15% of the stock ACL remains unharvested (**Option 4a**); at least 20% of the stock ACL remains unharvested (**Option 4b**); and at least 25% of the stock ACL remains unharvested (**Option 4c**). If one of **Options 4a-4c** is not chosen as preferred, and any amount of the stock ACL has not been landed, then the SSC will consider raising the ABC by default. For example:

*During the 2018-2019 fishing year, the commercial sector lands its allocation of king mackerel, while the recreational sector does not. The remaining stock ACL that went unharvested equals 2 mp of the total stock ACL of 10 mp (3.2 mp commercial ACL and 6.8 mp recreational ACL). This equals a 20% underage (**Option 4a** or **4b**). The Council convenes the SSC to consider increasing the ABC for the following fishing year only. The SSC determines that the ABC for the following fishing year can be increased by 500,000 lbs. This results in the commercial ACL for the 2019-2020 fishing season equaling 3.7 mp, while the recreational ACL would remain at 6.8 mp. This increase would be valid for the 2019-2020 fishing season only.*

In the above example, the sector allocations for Gulf king mackerel are still 68% recreational to 32% commercial. For the 2018-2019 fishing year, the stock ABC would equal 10.5 mp, as opposed to the 10.0-mp ABC from the previous fishing year. The 500,000 lb increase for the 2018-2019 fishing year would be added to the commercial sector's ACL for that year only, while the recreational sector's ACL would go unchanged. In the next year, the ACLs would return to the original amounts unless the quota sharing scenario was triggered again.

With respect to the functionality of **Alternatives X** and **4**, a sector will be considered to have “landed its quota or ACL” if that sector's preliminary landings are greater than or equal to 90% of that sector's ACL. If both sectors are landing their respective ACLs, then quota sharing will not be necessary as described.

The quota sharing strategies described in **Alternative 4** would require estimation of landings in order for ACL adjustments to be implemented by NMFS by the beginning of the next commercial fishing season. In-season commercial landings are typically determined using federal seafood dealer reports, while final landings are determined using trip ticket data. The latter is generally higher than the former, and is not typically available for many months following the closure of the fishing year in June. Recreational landings are determined by the Marine Recreational Information Program (MRIP), which collects data in two month waves. The data from a wave are not typically available for up to 60 days.

The main differences between the alternatives are in how unused allocation would be shared with the sector historically using its allocation, for how long that allocation will be shared, and which year of data would be used. **Alternative X** conditionally transfers some amount of allocation, and is dependent on recreational landings. **Alternative X** does this through the use of the “threshold trigger. **Alternative 4** states that any allocation sharing would only persist for a single year, but differs in that the status-quo allocations would not change as they would in **Alternative 2**. Finally, **Alternative X** will automatically use landings data from two years prior to determine any allocation sharing, but **Alternative 4** would use estimates from the previous year. If either **Alternative X** or **4** is chosen as preferred by the Councils, the CMP framework procedure for modifying ACLs as prescribed by the preferred alternative will be updated.

The gillnet component of the Gulf commercial king mackerel fishery is currently managed using a payback provision as a post-season accountability measure (AM). If the gillnet component exceeds its quota in a given fishing year, then in the following fishing year, the gillnet component's quota will be reduced by the amount of the previous year's overage. For the purposes of the alternatives in Action 1, if additional quota is to be added to the gillnet component's quota in a given year, such will be done in conjunction with any reduction resulting from the post-season AM.

### **Council Conclusions:**

## 2.2 Action 2 – Adjust the Recreational Accountability Measure for Gulf Migratory Group King Mackerel

**Alternative 1:** No Action – Retain the in-season recreational accountability measure (AM). If recreational landings reach or are projected to reach the recreational ACL, the bag limit will be reduced to zero for the remainder of the fishing year.

~~**Alternative 2:** Replace the current in-season AM with a post-season AM. If the recreational ACL is exceeded in any fishing year, the bag limit will be reduced to two fish per person per day for the following fishing year.~~

**Alternative 3:** Replace the current in-season AM with a post-season AM. If the recreational ACL is exceeded in any fishing year, the length of the following fishing season will be reduced by the amount necessary to ensure the landings do not exceed the ACL.

***IPT-Proposed Alternative 4:** Replace the current in-season AM with a post-season AM. If both the recreational ACL and the stock ACL are exceeded in a fishing year, the length of the following recreational fishing season will be reduced by the amount necessary to ensure the landings do not exceed the recreational ACL.*

*The IPT recommends removing Alternative 2 based on Gulf Council discussions at their June 2016 meeting. The IPT also proposes a new alternative, which may more closely align with the Gulf Council's goals with this amendment and is consistent with the AM for Atlantic migratory group king mackerel. Moving to a post-season AM is in fact more lenient than the current in-season AM, in that any effect of the AM wouldn't be felt by the recreational sector until the following fishing year; by that time, any shared allocation would be largely, if not entirely, returned to the recreational sector.*

### **Discussion:**

With **Alternative 1**, if a recreational ACL overage were to occur in a given year, it would essentially result in a fishing closure in the same season in which the overage occurred. Given that the recreational sector has not met its sector ACL in the last 10 years, it is unlikely that this AM would be triggered. However, should some proportion of the recreational sector ACL be shifted to the commercial sector ACL through Action 1, it is possible that the adjusted recreational sector ACL could be landed.

**Alternative 3** would institute a post-season AM in place of the in-season AM in **Alternative 1**, whereby if the recreational ACL is exceeded, the length of the following fishing season would be reduced by the amount necessary to ensure the recreational landings do not exceed the recreational ACL. By replacing the recreational in-season AM with a post-season AM the sector allocation sharing proposed in Action 1 would be allowed to occur without the risk of shutting down the recreational harvest of king mackerel in that year, by reducing the bag limit to zero. Thus, an additional protection is provided to the recreational sector in the event the allocation adjustment is large enough that the adjusted recreational sector ACL is exceeded.

***IPT-Proposed Alternative 4*** would also institute a post-season AM in place of the in-season AM in **Alternative 1**, whereby if the recreational ACL *and* the stock ACL are exceeded in a fishing year, the length of the following recreational fishing season will be reduced by the amount necessary to ensure the landings do not exceed the recreational ACL. Like **Alternative 3**, this type of post-season AM would reduce the risk of the recreational sector shutting down before any shared allocation could be shifted back. However, since both the recreational ACL *and* the stock ACL have to be exceeded, ***IPT-Proposed Alternative 4*** has the lowest general probability of being triggered compared to the other alternatives in Action 2.

**Council Conclusions:**

## CHAPTER 3. REFERENCES TO BE UPDATED

Atkinson L. P., D. W. Menzel, and K. A. E. Bush. 1985. Oceanography of the southeastern U.S. continental shelf. American Geophysical Union, Washington, DC.

Barnette, M. C. 2001. A review of the fishing gear utilized within the Southeast Region and their potential impacts on essential fish habitat. NOAA Technical Memorandum NMFS-SEFSC-449, 62pp.

Brooks, E. N. and M. Ortiz. 2004. Estimated von Bertalanffy growth curves for king mackerel stocks in the Atlantic and Gulf of Mexico. Sustainable Fisheries Division Contribution SFD-2004-05. SEDAR5 AW-10. National Oceanic and Atmospheric Administration, National Marine Fisheries Service, Southeast Fisheries Science Center. Miami, Florida.

Burdeau, C. and J. Reeves. 2012, APNewsBreak: Tests confirm oil came from BP spill. Published by the Associated Press on 6 September 2012 at 17:32 EDT. Accessed on September 11, 2013 at: [http://hosted2.ap.org/ZEBRA/98df8c7abf974deb9b6bf92f727c328d/Article\\_2012-09-06/id-2bc024be85d64e399c5529ce20cef665](http://hosted2.ap.org/ZEBRA/98df8c7abf974deb9b6bf92f727c328d/Article_2012-09-06/id-2bc024be85d64e399c5529ce20cef665).

Camilli, R., C. M. Reddy, D. R. Yoerger, B. A. S. Van Mooy, M. V. Jakuba, J. C. Kinsey, C. P. McIntyre, S. P. Sylva, and J. V. Maloney. 2010. Tracking hydrocarbon plume transport and biodegradation at Deepwater Horizon. *Science* 330(6001): 201-204.

Carls, M.G., S.D. Rice, and J.E. Hose. 1999. Sensitivity of Fish Embryos to Weathered Crude Oil: Part I. Low-level Exposure during incubation causes malformations, genetic damage, and mortality in larval Pacific herring (*Clupea pallasii*). *Environmental Toxicology and Chemistry* 18(3): 481-493.

DeLeo, D.M., D.V. Ruiz-Ramos, I.B. Baums, and E.E. Cordes. 2015. Response of deep-water corals to oil and chemical dispersant exposure. *Deep-Sea Research II*. In press.

Dumas, C. F., J. C. Whitehead, C. E. Landry, and J. H. Herstine. 2009. Economic impacts and recreation value of the North Carolina for-hire fishing fleet. North Carolina Sea Grant FRG Grant Report 07-FEG-05.

Fisher, C.R., P. Hsing, C.L. Kaiser, D.R., Yoerger, H.H. Roberts, W.W. Shedd, E.E. Cordes, T.M. Shank, S.P. Berlet, M.G. Saunders, E.A. Larcom, J.M. Brooks. 2014. Footprint of *Deepwater Horizon* blowout impact to deep-water coral communities. *Proceedings of the National Academy of Sciences* 111: 11744-11749. doi: 10.1073/pnas.1403492111

Gislason, Gordon. 2006. Commercial vs Recreational Fisheries Allocation in Canada: Pacific Herring, Salmon and Halibut. Sharing the Fish Conference, Fremantle, Western Australia. February 26-March 2, 2006.

GMFMC. 1993. Amendment 5 to the Reef Fish Fishery Management Plan for Reef Fish Resources of the Gulf of Mexico. Gulf of Mexico Fishery Management Council, 5401 West

Kennedy Blvd., Suite 331. Tampa, Florida. 450 p.

<http://www.gulfcouncil.org/Beta/GMFMCWeb/downloads/RF%20Amend-05%20Final%201993-02.pdf>

GMFMC. 1999. Regulatory amendment to the reef fish fishery management plan to set 1999 gag/black grouper management measures (revised). Gulf of Mexico Fishery Management Council, Tampa, Florida. 84 p.

<http://gulfcouncil.org/Beta/GMFMCWeb/downloads/RF%20RegAmend%20-%201999-08.pdf>

GMFMC. 2001. Generic amendment addressing the establishment of Tortugas Marine Reserves in the following fishery management plans of the Gulf of Mexico: Coastal migratory pelagics of the Gulf of Mexico and South Atlantic, coral and coral reefs, red drum, reef fish, shrimp, spiny lobster, and stone crab. Gulf of Mexico Fishery Management Council Plan. Gulf of Mexico Fishery Management Council, 3018 North U.S. Highway 301, Suite 1000. Tampa, Florida. 194 p.

<http://www.gulfcouncil.org/Beta/GMFMCWeb/downloads/TORTAMENwp.pdf>

GMFMC. 2003. Amendment 21 to the reef fish fishery management plan. Gulf of Mexico Fishery Management Council, 3018 North U.S. Highway 301, Suite 1000. Tampa, Florida. 215 p. <http://www.gulfcouncil.org/Beta/GMFMCWeb/downloads/Amend21-draft%203.pdf>

GMFMC. 2005. Generic amendment number 3 for addressing essential fish habitat requirements, habitat areas of particular concern, and adverse effects of fishing in the following fishery management plans of the Gulf of Mexico: shrimp fishery of the Gulf of Mexico, United States waters, red drum fishery of the Gulf of Mexico, reef fish fishery of the Gulf of Mexico, coastal migratory pelagic resources (mackerels) in the Gulf of Mexico and South Atlantic, stone crab fishery of the Gulf of Mexico, spiny lobster fishery of the Gulf of Mexico and South Atlantic, coral and coral reefs of the Gulf of Mexico. Gulf of Mexico Fishery Management Council. Tampa, Florida.

[http://www.gulfcouncil.org/Beta/GMFMCWeb/downloads/FINAL3\\_EFH\\_Amendment.pdf](http://www.gulfcouncil.org/Beta/GMFMCWeb/downloads/FINAL3_EFH_Amendment.pdf)

GMFMC. 2008. Amendment 30B to the reef fish fishery management plan. Gulf of Mexico Fishery Management Council, 2203 North Lois Avenue, Suite 1100, Tampa, FL 33607. 427 p. [http://www.gulfcouncil.org/Beta/GMFMCWeb/downloads/Final%20Amendment%2030B%2010\\_10\\_08.pdf](http://www.gulfcouncil.org/Beta/GMFMCWeb/downloads/Final%20Amendment%2030B%2010_10_08.pdf)

GMFMC and SAFMC. 1982. Fishery management plan for coral and coral reefs in the Gulf of Mexico and South Atlantic. Gulf of Mexico Fishery Management Council, Lincoln Center, Suite 881, 5401 W. Kennedy Boulevard, Tampa, Florida; South Atlantic Fishery Management Council, Southpark Building, Suite 306, 1 Southpark Circle, Charleston, South Carolina, 29407. 332 p.

<http://www.gulfcouncil.org/Beta/GMFMCWeb/downloads/Coral%20FMP.pdf>

GMFMC and SAFMC. 1985. Amendment 1 to the fishery management plan, environmental impact statement, for coastal migratory pelagic resources (mackerels). Gulf of Mexico Fishery Management Council, Tampa, Florida, and South Atlantic Fishery Management Council.

Charleston, South Carolina. [ftp://ftp.gulfcouncil.org/Web\\_Archive/Mackerel/MAC%20Amend-01%20Final%20Apr85.pdf](ftp://ftp.gulfcouncil.org/Web_Archive/Mackerel/MAC%20Amend-01%20Final%20Apr85.pdf)

GMFMC and SAFMC. 2000. Amendment 9 to the fishery management plan and environmental assessment for coastal migratory pelagic resources (mackerels). Gulf of Mexico Fishery Management Council. Tampa, Florida, and South Atlantic Fishery Management Council. Charleston, South Carolina. [ftp://ftp.gulfcouncil.org/Web\\_Archive/Mackerel/MAC%20Amend-09%20Final%20Nov98.pdf](ftp://ftp.gulfcouncil.org/Web_Archive/Mackerel/MAC%20Amend-09%20Final%20Nov98.pdf)

GMFMC and SAFMC. 2011. Amendment 18 to the fishery management plan for coastal migratory pelagic resources in the Gulf of Mexico and Atlantic regions. Gulf of Mexico Fishery Management Council. Tampa, Florida, and South Atlantic Fishery Management Council. Charleston, South Carolina. <http://www.gulfcouncil.org/docs/amendments/Final%20CMP%20Amendment%2018%20092311%20w-o%20appendices.pdf>

GMFMC and SAFMC. 2013. Generic amendment to the fishery management plans of the Gulf of Mexico and Atlantic regions: Modifications to Federally-Permitted Seafood Dealer Reporting Requirements. Gulf of Mexico Fishery Management Council. Tampa, Florida, and South Atlantic Fishery Management Council. Charleston, South Carolina. <http://gulfcouncil.org/docs/amendments/Modifications%20to%20Federally-Permitted%20Seafood%20Dealer%20Reporting%20Requirements.pdf>

GMFMC and SAFMC. 2014. Final Amendment 20B to the fishery management plan for coastal migratory pelagic resources in the Gulf of Mexico and Atlantic region including environmental assessment, fishery impact statement, regulatory impact review, and regulatory flexibility act analysis. Gulf of Mexico Fishery Management Council. Tampa, Florida, and South Atlantic Fishery Management Council. Charleston, South Carolina. <http://gulfcouncil.org/docs/amendments/CMP%20Amendment%2020B.pdf>

GMFMC. 2015. Final draft for Amendment 28 to the fishery management plan for the reef fish resources of the Gulf of Mexico including draft environmental impact statement, fishery impact statement, regulatory impact review, and regulatory flexibility act analysis. Gulf of Mexico Fishery Management Council. Tampa, Florida. [http://gulfcouncil.org/council\\_meetings/Briefing%20Materials/BB-08-2015/B%20-%206%28a%29%20Amendment%2028%20Final.pdf](http://gulfcouncil.org/council_meetings/Briefing%20Materials/BB-08-2015/B%20-%206%28a%29%20Amendment%2028%20Final.pdf)

Godcharles, M. F., and M. D. Murphy. 1986. Species profiles: life history and environmental requirements of coastal fishes and invertebrates (south Florida) -- king mackerel and Spanish mackerel. U. S. Fish and Wildlife Service Biological Report 82(11.58). U.S. Army Corps of Engineers TR EL-82-4. Vicksburg, Mississippi.

Goodman, R., 2003. Tar balls: The end state. Spill Science & Technology Bulletin 8(2): 117-121.



Gore, R. H. 1992. The Gulf of Mexico: A treasury of resources in the American Mediterranean. Pineapple Press. Sarasota, Florida.

Harper, J. 2003. Exxon Valdez Oil Spill Trustee Council Gulf of Alaska Ecosystem Monitoring Project Final Report. ShoreZone Mapping of the Outer Kenai Coast, Alaska. Gulf of Alaska Ecosystem Monitoring Project 02613.

Haensly, W.E., J.M. Neff, J.R. Sharp, A.C. Morris, M.F. Bedgood, and P.D. Beom 1982. Histopathology of *Pleuronectes platessa* from Aber Wrac'h and Aber Benoit, Brittany, France: long-term effects of the Amoco Cadiz crude oil spill. *Journal of Fish Disease* 5: 365-391.

Heintz, R.A., J.W. Short, and S.D. Rice. 1999. Sensitivity of fish embryos to weathered crude oil: Part II. Increased mortality of pink salmon (*Oncorhynchus gorbuscha*) embryos incubating downstream from weathered Exxon Valdez crude oil. *Environmental Toxicology and Chemistry* 18(3): 494–503.

Holland, S. M., A. J. Fedler and J. W. Milon. 1999. The operations and economics of the charter and Head Boat Fleets of the Eastern Gulf of Mexico and South Atlantic Coasts. Report for NMFS, MARFIN program grant number NA77FF0553.

Hose, J.E., M.D. McGurk, G.D. Marty, D.E. Hinton, E.D Brown, and T.T. Baker. 1996. Sublethal effects of the (Exxon Valdez) oil spill on herring embryos and larvae: morphological, cytogenetic, and histopathological assessments, 1989–1991. *Canadian Journal of Fisheries and Aquatic Sciences* 53: 2355-2365.

Hsing, P., B. Fu, E.A. Larcom, S.P. Berlet, T.M. Shank, A.F. Govindarajan, A.J. Lukasiewicz, P.M. Dixon, C.R. Fisher. 2013. Evidence of lasting impact of the Deepwater Horizon oil spill on a deep Gulf of Mexico coral community. *Elementa: Science of the Anthropocene* 1: 1-15.

Incardona, J.P., L. D. Gardnerb, T. L. Linbo, T. L. Brown, A. J. Esbaugh, E. M. Mager, J. D. Stieglitz, B. L. French, J. S. Labenia, C. A. Laetz, M. Tagal, C. A. Sloan, A. Elizur, D. D. Benetti, M. Grosell, B. A. Block, and N. L. Scholz. 2014. Deepwater Horizon crude oil impacts the developing hearts of large predatory pelagic fish. *Proceedings of the National Academy of Sciences of the United States of America* 111(15): 1510-1518.

IPCC (Intergovernmental Panel on Climate Change). 2007. Contribution of Working Group II to the Fourth Assessment Report of the Intergovernmental Panel on Climate Change. M. L. Parry, O. F. Canziani, J. P. Palutikof, P. J. van der Linden and C. E. Hanson (eds). Cambridge University Press, Cambridge, United Kingdom and New York, NY, USA.

Jacob, S., P. Weeks, B. Blount, and M. Jepson. 2013. Development and evaluation of social indicators of vulnerability and resiliency for fishing communities in the Gulf of Mexico. *Marine Policy* 37:86-95.

- Jepson, M. and L. L. Colburn. 2013. Development of social indicators of fishing community vulnerability and resilience in the U.S. Southeast and Northeast Regions. U.S. Dept. of Commerce, NOAA Technical Memorandum NMFS-F/SPO-129, 64 p.
- Kennedy, V. S., R. R. Twilley, J. A. Kleypas, J. H. Cowan, and S. R. Hare. 2002. Coastal and marine ecosystems & global climate change. Report prepared for the Pew Center on Global Climate Change. 52p. Available at: [http://www.c2es.org/docUploads/marine\\_ecosystems.pdf](http://www.c2es.org/docUploads/marine_ecosystems.pdf).
- Khan, R.A. and J.W. Kiceniuk. 1984. Histopathological effects of crude oil on Atlantic cod following chronic exposure. *Canadian Journal of Zoology* 62: 2038-2043.
- Khan R.A. and J.W. Kiceniuk. 1988. Effect of petroleum aromatic hydrocarbons on monogeneids parasitizing Atlantic cod, *Gadus morhua*. *Bulletin of Environmental Contamination and Toxicology* 41: 94-100.
- Khan, R.A. 1990. Parasitism in Marine Fish after Chronic Exposure to Petroleum Hydrocarbons in the Laboratory and to the Exxon Valdez Oil Spill. *Bulletin of Environmental Contamination and Toxicology* 44: 759-763.
- Kiceniuk J.W. and R.A. Khan. 1987. Effect of petroleum hydrocarbons on Atlantic cod, *Gadus morhua*, following chronic exposure. *Canadian Journal of Zoology* 65: 490-494.
- Kujawinski, E. B., M. C. Kido Soule, D. L. Valentine, A. K. Boysen, K. Longnecker, and M. C. Redmond. 2011. Fate of dispersants associated with the Deepwater Horizon Oil Spill. *Environmental Science and Technology* 45: 1298-1306.
- Lee, T. N., M. E. Clarke, E. Williams, A. F. Szmant, and T. Berger. 1994. Evolution of the Tortugas Gyre. *Bulletin of Marine Science* 54(3):621-646.
- Leis, J. M. 1991. The pelagic stage of reef fishes: the larval biology of coral reef fishes. Pages 183-230 in P. F. Sale editor. *The ecology of fishes on coral reefs*. Academic Press, New York, NY.
- Liese, C. and D. W. Carter. 2011. Collecting economic data from the for-hire fishing sector: Lessons from a cost and earnings survey of the Southeast U.S. charter boat industry. 14 p. In Beard, T.D., Jr., A.J. Loftus, and R. Arlinghaus (editors). *The Angler and the Environment*. American Fisheries Society, Bethesda, MD.
- MSAP (Mackerel Stock Assessment Panel). 1996. Report of the Mackerel Stock Assessment Panel. Prepared by the Mackerel Stock Assessment Panel. Gulf of Mexico Fishery Management Council. Tampa, Florida.
- Mayo C. A. 1973. Rearing, growth, and development of the eggs and larvae of seven scombrid fishes from the Straits of Florida. Doctoral dissertation. University of Miami, Miami, Florida.

McEachran, J. D. and J. D. Fechhelm. 2005. Fishes of the Gulf of Mexico. Volume 2 University of Texas Press, Austin.

McEachran, J. D., and J. H. Finucane. 1979. Distribution, seasonality and abundance of larval king and Spanish mackerel in the northwestern Gulf of Mexico. (Abstract). Gulf States Marine Fisheries Commission. Publication Number 4. Ocean Springs, Mississippi.

Menzel, D. W., editor. 1993. Ocean processes: U.S. southeast continental shelf. DOE/OSTI -- 11674. U.S. Department of Energy.

Mendelssohn, I.A., G.L. Andersen, D.M. Baltz, R.H. Caffey, K.R. Carman, J.W. Fleeger, S.B. Joye, Q. Lin, E. Maltby, E.B. Overton, and L.P. Rozas. 2012. Oil Impacts on coastal wetlands: Implications for the Mississippi River delta ecosystem after the *Deepwater Horizon* oil spill. *BioScience* 62: 562–574.

Murawski, S.A., W.T. Hogarth, E.B. Peebles, and L. Barbieri. 2014. Prevalence of external skin lesions and polycyclic aromatic hydrocarbon concentrations in Gulf of Mexico fishes, post-*Deepwater Horizon*. *Transactions of the American Fisheries Society* 143(4): 1084-1097.

Rico-Martinez, R., T.W. Snell, and T.L. Shearer. 2013. Synergistic toxicity of Macondo crude oil and dispersant Corexit 9500A ((R)) to the *Brachionus plicatilis* species complex (Rotifera). *Environmental Pollution* 173: 5–10.

National Commission. 2010. The use of surface and subsea dispersants during the BP Deepwater Horizon oil spill. National Commission on the BP Deepwater Horizon Oil Spill and Offshore Drilling (National Commission). Staff Working Paper No. 4. <http://www.oilspillcommission.gov/sites/default/files/documents/Updated%20Dispersants%20Working%20Paper.pdf>

Needham, H., D. Brown, and L. Carter. 2012. Impacts and adaptation options in the Gulf coast. Report prepared for the Center for Climate and Energy Solutions. 38 p. Available at: <http://www.c2es.org/docUploads/gulf-coast-impacts-adaptation.pdf>.

NMFS. 2009. Fisheries Economics of the United States 2006. U.S. Department of Commerce, NOAA Tech. Memo. NMFS-F/SPO-97. 158 p. Available at: <http://www.st.nmfs.gov/st5/publications/index.html>.

NMFS. 2015. Biological opinion on the continued authorization of Fishery Management Plan (FMP) for Coastal Migratory Pelagic Resources in the Atlantic and Gulf of Mexico. June 18, 2015. Available at: [http://sero.nmfs.noaa.gov/protected\\_resources/section\\_7/freq\\_biop/documents/fisheries\\_bo/2015\\_cmp\\_opinion.pdf](http://sero.nmfs.noaa.gov/protected_resources/section_7/freq_biop/documents/fisheries_bo/2015_cmp_opinion.pdf)

Schekter, R. C. 1971. Food habits of some larval and juvenile fishes from the Florida current near Miami, Florida. MS Thesis, University of Miami, Coral Gables.

Schwartz, F. J. 1989. Zoogeography and ecology of fishes inhabiting North Carolina's marine waters to depths of 600 meters. 335-374. In R. Y. George, and A. W. Hulbert, editors. North Carolina coastal oceanography symposium. U.S. Dep. Commerce, NOAA-NURP Rep. 89-2.

SEDAR 16. 2009. South Atlantic and Gulf of Mexico king mackerel benchmark stock assessment report. Southeast Data, Assessment, and Review. North Charleston, South Carolina. [http://www.sefsc.noaa.gov/sedar/download/SEDAR16\\_final\\_SAR.pdf?id=DOCUMENT](http://www.sefsc.noaa.gov/sedar/download/SEDAR16_final_SAR.pdf?id=DOCUMENT)

SEDAR 31. 2013. Stock assessment report for Gulf of Mexico red snapper. Southeast Data, Assessment and Review. North Charleston, South Carolina. 1103 pp.

SEDAR 38. 2014. Stock assessment report for Gulf of Mexico king mackerel. Southeast Data, Assessment and Review. North Charleston, South Carolina. 465 pp.

Short, J. 2003. Long-term effects of crude oil on developing fish: Lessons from the Exxon Valdez oil spill. *Energy Sources* 25(6): 509-517.

Sindermann, C.J. 1979. Pollution-associated diseases and abnormalities of fish and shellfish: a review. *Fisheries Bulletin* 76: 717-749.

Solangi, M.A. and R.M. Overstreet. 1982. Histopathological changes in two estuarine fishes, *Menidia beryllina* (Cope) and *Trinectes maculatus* (Bloch and Schneider), exposed to crude oil and its water-soluble fractions. *Journal of Fish Disease* 5: 13-35.

Solomon, S., D. Qin, M. Manning, Z. Chen, M. Marquis, K. B. Averyt, M. Tignor, and H. L. Miller. Intergovernmental Panel on Climate Change 2007. *Climate Change 2007: The Physical Science Basis. Contribution of Working Group I to the Fourth Assessment Report of the Intergovernmental Panel on Climate Change* Cambridge University Press, Cambridge, United Kingdom and New York, New York. Available at: [http://www.ipcc.ch/publications\\_and\\_data/publications\\_ipcc\\_fourth\\_assessment\\_report\\_wg1\\_report\\_the\\_physical\\_science\\_basis.htm](http://www.ipcc.ch/publications_and_data/publications_ipcc_fourth_assessment_report_wg1_report_the_physical_science_basis.htm).

Sutton, S. G., R. B. Ditton, J. R. Stoll, and J. W. Milon. 1999. A cross-sectional study and longitudinal perspective on the social and economic characteristics of the charter and party boat fishing industry of Alabama, Mississippi, Louisiana, and Texas. Report by the Human Dimensions of Recreational Fisheries Research Laboratory, Texas A&M for NMFS, MARFIN program grant number NA 77FF0551.

Swedmark, M., A. Granmo, and S. Kollberg. 1973. Effects of oil dispersants and oil emulsions on marine animals. *Water Research* 7(11): 1649-1672.

Tarnecki, J.H. and W.F. Patterson III. 2015. Changes in red snapper diet and trophic ecology. *Marine and Coastal Fisheries: Dynamics, Management, and Ecosystem Science* 7: 135-147.

Vondruska, J. 2010. Fishery analysis of the commercial fisheries for eleven coastal migratory pelagic species. SERO-FSSB-2010-01. National Marine Fisheries Service, Southeast Regional Office. St. Petersburg, Florida.

White, H.K., P. Hsing, W. Cho, T.M. Shank, E.E. Cordes, A.M. Quattrini, R.K. Nelson, R. Camili, A.W.J. Demopoulos, C.R. German, J.M. Brooks, H.H. Roberst, W. Shedd, C.M. Reddy, C.R. Fisher. 2012. Impact of the *Deepwater Horizon* oil spill on a deep-water coral community in the Gulf of Mexico. *Proceedings of the National Academy of Sciences* 109:20303-20308.

Whitehead, J. C. 2006. A comparison of contingent valuation method and random utility model estimates of the value of avoiding reductions in king mackerel bag limits. *Applied Economics* 38(15):1725-1735.

Williams, R. O., and R. G. Taylor. 1980. The effect of water temperature and winter air temperature on springtime migrations of king mackerel in the vicinity of Tampa Bay, Florida. *Florida Science* 43(supplemental):26 (abstract).

Wollam, M. B. 1970. Description and distribution of larvae and early juveniles of king mackerel, *Scomberomorus cavalla* (Cuvier), and Spanish mackerel, *S. maculatus* (Mitchill); (Pisces: Scombridae); in the Western North Atlantic. Florida Department of Natural Resources Laboratory Technical Service 61.

Yeung, C., and M. F. McGowan. 1991. Differences in inshore-offshore and vertical distribution of phyllosoma larvae of *Panulirus*, *Scyllarus*, and *Scyllarides* in the Florida Keys in May-June, 1989. *Bulletin of Marine Science* 49:699-714.

# APPENDIX A. SUMMARIES OF PUBLIC COMMENTS RECEIVED

## Gulf of Mexico Scoping Workshop Comments

*These comments were received with respect to Amendment 26 to the CMP FMP, and have been limited to those comments received with pertain to the proposed management alternatives in Action 1.*

### SCOPING WORKSHOPS

Coastal Migratory Pelagics  
Amendment 26  
King Mackerel Allocations & Mixing Zone Delineation

Biloxi, Mississippi  
March 31, 2015

---

Meeting Attendees:  
Rufus Young

#### Gulf King Mackerel Sector Allocation

Should the Gulf Council adjust the commercial and recreational allocations for king mackerel?

- There should be a hard shift of 10% of the allocation from the recreational to commercial sector. Anything to give the commercial side more and keep the season open longer.

Saint Petersburg, Florida  
April 13, 2015

---

Meeting Attendees:  
Richard Sergent  
Stewart Hehenberger

#### Gulf King Mackerel Sector Allocation

Should the Gulf Council adjust the commercial and recreational allocations for king mackerel?

- The fish that are under harvested by the recreational sector should be given to the commercial sector.

Key West, Florida  
April 19, 2015

---

Meeting Attendees:

George Niles  
Daniel Padron  
Bill Kelly

Gulf King Mackerel Sector Allocation

Should the Gulf Council adjust the commercial and recreational allocations for king mackerel?

- There has to be some way to use the fish that aren't being harvested.
- Recreational fish already go against commercial quota because they can sell the fish they catch.
- Give the commercial fishermen quota from the recreational sector until the recreational sector is landing 80% of its quota.
- The three million pounds of fish being left in the water by the recreational sector is not being caught, and using a "use it or lose it" for a million of those pounds over 5 years doesn't make sense.

How should the king mackerel annual catch limit be allocated?

- The recreational sector should lend portion of their quota to commercial sector because they're not using it and fish are being wasted. Try lending program for a year and see how it works.
- Attendees in favor of proportional allocation, where the Western Zone would get 45.53%; the Northern Zone, 7.61%; and each component of the Southern Zone, 23.43%.
- The allocation in the northern areas doesn't make sense. Those areas were never where the heart of the fishery was.

Galveston, Texas  
April 27, 2015

---

Meeting Attendees:

Shane Cantrell

Gulf King Mackerel Sector Allocation

Should the Gulf Council adjust the commercial and recreational allocations for king mackerel?

- More recreational input is needed before a decision on allocation is made. We should have more information on why the recreational sector isn't harvesting their allocation. They shouldn't necessarily be penalized for under harvesting.

How should the king mackerel annual catch limit be allocated?

- A bag limit analysis and research on mortality rate of king mackerel releases should be performed to inform this decision.

Grand Isle, Louisiana  
April 28, 2015

---

Meeting Attendees:

Dean Blanchard  
Kelty Readenour  
Michael Frazier  
Abigail Frazier  
Brian Hardcastle

#### Sector Reallocation of Gulf King Mackerel

Should the Gulf Council adjust the commercial and recreational allocations for king mackerel?

- Do not move recreational allocation to commercial sector. You don't want to mess with those guys, or you'll never hear the end of it.



# **APPENDIX B. ECONOMIC ANALYSIS OF REALLOCATION SCENARIOS FOR GULF MIGRATORY GROUP KING MACKEREL**

July 6, 2015

Social Science Research Group and Sustainable Fisheries Division  
NOAA Southeast Fisheries Science Center

This communication addresses the request to conduct an economic analysis of Gulf of Mexico king mackerel reallocation proposals in support of Amendment 24 to the Fishery Management Plan for the Coastal Migratory Pelagic Resources in the Gulf of Mexico and Atlantic Region. The request solicited an analysis of alternatives that could redistribute 2%, 5%, 10%, or 20% of the king mackerel quota from the recreational sector to the commercial sector. Table 1 shows the current allocation and proposed alternatives.

**Table 1.** Status quo and allocation alternatives

Sector	SQ	Percent from Recreational to Commercial			
		2%	5%	10%	20%
		<i>--Allocation in Percent--</i>			
Commercial	32%	34%	37%	42%	52%
Recreational	68%	66%	63%	58%	48%
		<i>--Allocation in million lbs--</i>			
Commercial	3.456	3.672	3.996	4.536	5.616
Recreational	7.344	7.128	6.804	6.264	5.184

The methods and data used in the short-run allocation economic analysis are documented in the Appendices A and B. Table 2 summarizes the main results of the analysis. The short-run analysis suggests that the largest (20%) reallocation proposal could increase the welfare of the commercial sector and the nation by almost \$1 million dollars per year. Any reallocation to the commercial sector would increase the amount harvested and decrease recreational and commercial catch rates because the recreational sector does not harvest their entire annual catch limit (ACL). Because in the short-run the reduction in commercial and recreational catch rates is likely to be minor, commercial harvesting costs and the quality of the recreational experience are not expected to be impacted. However, in the medium and long-run, large reallocations could lead to significant catch rate reductions, particularly in the recreational sector, which could reduce the welfare of this sector because anglers value catching and releasing king mackerel. Presently, the long-run impacts of these reallocation proposals cannot be estimated. Preliminary estimates from the king mackerel stock assessment model suggests that reductions in catch rates could be significant if a large portion of the surplus (un-harvested) recreational ACL is reallocated to the commercial sector (Appendix B and C). Additional research is necessary to compare the longer-term economic costs of recreational catch rate reductions with the economic benefits of reallocating to the commercial sector.

**Table 2.** Inflation-adjusted annual net benefits from quota reallocation proposals (2014=100).

Reallocation Alternative	Anticipated annual added benefits (\$) to the commercial sector	Anticipated annual losses (\$) to the recreational sector	Annual net benefit (\$) from the reallocation alternative
2%	92,532	Negligible	92,532
5%	231,331	Negligible	231,331
10%	462,664	Negligible	462,664
20%	925,328	Negligible	925,328

\*This short-run analysis assumes that the quality of the fishing experience is not diminished by potentially lower catch rates.

## Appendix B-A. Commercial Sector Analysis

### Overview

King mackerel (*Scomberomorus cavalla*) is a migratory coastal pelagic species that supports important commercial and recreational fisheries in the Gulf of Mexico and South Atlantic regions. In the Gulf of Mexico the recreational sector is assigned 68% of the overall quota and the commercial sector is assigned the remaining 32%. The recreational sector typically harvests less than half of their allocation of the Gulf of Mexico king mackerel quota whereas commercial sector harvests have consistently been at or above their quota allocation. Consequently, the Gulf the Mexico Fishery Management Council is considering policies that would redistribute 2%, 5%, 10%, or 20% the king mackerel quota from the recreational sector to the commercial sector. In the 2013/14 fishing season, the commercial fleet landed over 2.5 million pounds (mp) of king mackerel gutted weight (gw) worth \$5.6 million in revenues in the Gulf of Mexico. Handlines, trolls and to a lesser extent gillnets are the main fishing gear used. The Gulf king mackerel commercial fishery is managed with limited entry, area and gear specific quotas, fishing seasons, trip limits and minimum size limits. Issuance of new king mackerel vessel permits is under a moratorium, but existing permits are transferable. The harvest of king mackerel using gillnet in the Florida west coast subzone requires a gillnet endorsement. Table 1 provides an overview of the main regulations affecting the commercial sector.

**Table 1.** Main commercial regulations for the Gulf of Mexico king mackerel fishery.

Zones	Subzone	Gear Sector	Quota (lbs)	Trip limit (lbs)	Fishing year
<b>Western</b>			1,071,360	3,000	Jul 1-Jun 30
<b>Eastern</b>	East Coast		1,102,896	50/75 fish <sup>1</sup>	Nov 1-Mar31
	Northern		178,848	1,250/500 (H&L)	Jul 1-Jun 30
	Southern	Hook and line	551,448	1,250/500	Jul 1-Jun 30
		Gillnet	551,448	25,000	MLK(Feb) <sup>2</sup> -Jun 30

<sup>1</sup>The average weight for a king mackerel in the South Atlantic region is about 9.8 lbs. (John Walter, pers. comm.). The conversion ratio from gutted weight to whole weight is 1.04.

<sup>2</sup>Martin Luther King (MLK) holiday.

### Conceptual Model

To investigate the potential economic gains of quota redistribution proposals to the commercial sector, we assume that commercial fishermen that land king mackerel want to maximize net benefits subject to the king mackerel trip limit (i.e., trip quota). Therefore, when king mackerel landings make up the majority of the trip landings, we posit that fishermen maximize net benefits by minimizing their harvesting costs because they face an exogenously set trip limit (i.e., revenues are fixed). Conversely, when king mackerel landings do not account for the majority of the trip landings we assume that fishermen maximize net benefits over the entire catch mix, not

only king mackerel.<sup>1</sup> In other words, fishermen maximize profits by controlling both harvesting costs and the catch composition. This profit maximizing behavioral assumption implicitly assumes that when fishermen reach their king mackerel trip limit they stop fishing. King mackerel acts a constraint on the trip level harvesting process. Hence, the economic value of a king mackerel at the trip limit is the added net revenue obtained from the entire catch mix obtained by relaxing the king mackerel trip limit by one unit (i.e., its shadow price). If the trip limit is not binding then the marginal benefit from easing the trip limit is zero. Under the cost minimizing behavioral model, we assume that fishermen can only select the optimal input or factor mix since they face an exogenously determined king mackerel trip limit. Mathematically,

$$\text{Min } C(w, y) = \sum_{j=1}^m w_j x_j(w, y) \quad (1)$$

where  $C$  is the restricted (short-run) cost function,  $y$  is harvest of king mackerel,  $w_j$  is the price of input  $j$ , and  $x_j$  is the amount of input  $j$  used. As is customary in production analyses, we presume that the cost function is non-decreasing in input prices and output, linearly homogenous in input prices and concave and continuous in input prices.

Differentiating the cost function with the respect to the fixed (or regulated) output (i.e., king mackerel) we obtain the marginal cost function

$$\frac{\partial C}{\partial y} = MC(w, y). \quad (2)$$

The marginal cost function captures the cost of harvesting an additional unit of king mackerel. The net benefit of harvesting an additional unit of king mackerel is the difference between the king mackerel dockside price and the marginal cost. Mathematically,

$$\lambda_1^c = p_1 - \frac{\partial C(w, y)}{\partial y}. \quad (3)$$

Note that because we cannot directly observe marginal costs, we need to recover the marginal cost function from the estimates of the system of input demand functions, which are obtained by applying Shepard's lemma. Mathematically,

$$\frac{\partial C}{\partial w_j} = x_j(w, y). \quad (4)$$

Input demand functions describe the optimal adjustment of inputs in response to changes in input prices given an exogenously determined output level.

---

<sup>1</sup> For analytical purposes, we (arbitrarily) assumed that “the majority of the landings” rule applies when king mackerel makes up 85% or more of the overall trip landings. This assumption lends greater confidence to the cost minimization assumption.

Now, when king mackerel landings do not make up the majority of the trip landings, we assume that fishermen maximize profits by selecting the economically optimal input use and catch mix and subject to the king mackerel trip limit. Mathematically,

$$\text{Max } \pi(p, w; q) = \sum_{i=1}^n p_i y_i - \sum_{j=1}^m w_j x_j + \lambda(q - y_1) \quad (5)$$

where  $\pi$  is the restricted (short-run) profit function,  $y_i$  is harvest of species  $i$  ( $i=1$  king mackerel),  $w_j$  is the price of input  $j$ ,  $x_j$  is the amount of input  $j$  used and  $q$  is the king mackerel trip limit. The marginal net benefit (or ‘shadow price’) of an additional king mackerel is given by the added profit from harvesting over the entire harvest mix when the king mackerel trip limit is relaxed by one additional unit. The shadow price of relaxing the king mackerel trip limit by one unit is simply found by differentiating the profit function with respect to the regulated output (king mackerel)

$$\frac{\partial \pi}{\partial q} = \lambda_1^p. \quad (6)$$

As in the case of the cost minimization model, we cannot directly observe the shadow price so we need to recover it from the estimates of the jointly estimated system of input demands and output supply.

Differentiating the profit function with the respect to input prices we obtain input demand functions

$$\frac{\partial \pi}{\partial w_j} = -x_j. \quad (7)$$

Applying Hotelling’s lemma, we obtain the output supply for species  $i \neq 1$

$$\frac{\partial \pi}{\partial p_i} = y_i. \quad (8)$$

The input demand and output supply functions describe the optimal adjustment of outputs and inputs in response to changes in output and input prices.

## Data

Detailed trip-level data on landings, gear, fishing effort, landing and fishing location, crew size, vessel characteristics, dockside prices and variable costs for those vessels that landed at least one hundred pounds of king mackerel (one thousand pounds for gillnets) were obtained from the National Marine Fisheries Service. The analysis was limited to hook and line (i.e., handline and troll) and gillnet vessels because they were responsible for the majority of the landings. The

analysis focused on the last three complete fishing years (2011/12 through 2013/14) to mitigate potential confounding effects from the Deepwater Horizon oil spill.

The empirical model specified two inputs and one (or two) outputs depending on the behavioral model. The two outputs (species) were king mackerel and a residual or miscellaneous group. The price of the residual species was obtained by dividing the total gross revenue by the total landings (excluding king mackerel). The two inputs included energy (fuel consumption) and labor (crew size). Annual dummies were used to control for king mackerel resource abundance. Fishing year 2013/14 was defined as the base year. Because fuel consumption information is only collected on a subset of the fleet, we imputed fuel consumption for the remaining vessels as a function of vessel characteristics and trip duration. Diesel #2 prices were obtained from the US Energy Information Administration.

The return to the labor was measured by its opportunity cost. The crew’s opportunity cost was set equal to wages of production employees, whereas captains received an arbitrary 20% premium over regular crew’s earnings (Squires, 1988; Walden *et al.*, 2014). The labor earnings were obtained from the U.S. Bureau of Labor Statistics. The opportunity cost of captain and crew were aggregated into a single wage rate. All output and input prices were adjusted by the GDP deflator (2014=100). Table 4 summarizes the descriptive statistics.

**Table 2.** Descriptive statistics of the commercial fleet.

Variable	Units	Mean	Minimum	Maximum	Std. Deviation
King mackerel landings	lbs gw/trip	376.07	0.96	38,813.46	1,048.69
Other species landings	lbs gw/trip	127.89	0.01	11,995.00	515.24
Diesel # 2 price	\$/gallon	3.24	2.86	3.55	0.16
Captain and crew wage	\$/trip	226.24	165.06	2,642.99	150.03
Price of king mackerel	\$/lbs gw	2.50	0.63	4.59	0.62
Price of other species	\$/lbs gw	0.95	0.01	51.13	1.70

\*All prices and wages are deflated using the GDP deflator (2014=100)

## Empirical model

Broadly, we estimate the added benefits from redistributing quota to the commercial sector by assuming that the commercial sector is made up of cost minimizing and profit maximizing fishing vessels. Due to the multiplicity of area and gear specific quotas, we estimated indirect, trip-level cost and profit functions for the main area-gear combinations. Both cost minimizing and profit maximizing behavior were modelled using a generalized Leontief flexible function form.

The indirect restricted cost function is given by

$$C(w,y) = y \left( \sum_{i=1}^2 \sum_{k=1}^2 \beta_{ik} (w_i^{1/2} w_k^{1/2}) \right) + \sum_{i=1}^2 \sum_{l=1}^2 \delta_{il} w_i D_l \quad (9)$$

where  $w_i$  are input prices (fuel and labor),  $y$  is the king mackerel landings and  $D$  is a dichotomous variable to account for annual changes in king mackerel abundance. Symmetry is imposed by setting  $\beta_{ik} = \beta_{ki}$  for  $k \neq i$ .

Applying Shepard's lemma, we obtain the factor demand which we divide by the output level to reduce the potential for heteroscedasticity (Parks, 1971). Mathematically,

$$\frac{1}{y} \frac{\partial C(w, y)}{\partial w_i} = -\frac{x_i}{y} = \sum_{i=1}^2 \beta_{ik} \left( \frac{w_k}{w_i} \right)^{1/2} + \sum_{l=1}^2 \delta_{il} D_l . \quad (10)$$

Using the parameters estimated above, we recover the marginal cost function which is given by

$$\frac{\partial C(w, y)}{\partial y} = MC(w, y) = \sum_{i=1}^2 \sum_{k=1}^2 \beta_{ik} (w_i^{1/2} w_k^{1/2}) + \sum_{i=1}^2 \sum_{l=1}^2 \delta_{il} w_i D_l . \quad (11)$$

Then, we obtain the net benefit from harvesting an additional unit by subtracting the king mackerel dockside price from the marginal cost. Mathematically,

$$\lambda_1^c = p_1 - \frac{\partial C(w, y)}{\partial y} . \quad (12)$$

The indirect restricted profit function captures the difference between dockside revenues and variable costs (fuel and labor) and is given by

$$\pi(p, y) = y_1 \left( \sum_i \sum_j \beta_{ij} (p_i^{1/2} p_j^{1/2}) \right) + \sum_i \sum_l \delta_{il} p_i D_l \quad (13)$$

where  $\pi$  is the profit function,  $p_i$  are input and output prices,  $D$  is a dichotomous yearly dummy to control for changes in king mackerel abundance and  $y_1$  is the fixed output, king mackerel. King mackerel was modeled as a fixed output because is subject to an exogenously determined trip limit. The fishing year 2013/14 is set as the base year. Symmetry is imposed by setting  $\beta_{ij} = \beta_{ji}$  for  $i \neq j$ .

Applying Hotelling's lemma, we obtain the associated output supply for  $i \neq 1$

$$\frac{1}{y_1} \frac{\partial \pi}{\partial p_i} = y_i = (\beta_{ii} E + \sum_{j \neq i} \beta_{ij} \left( \frac{p_j}{p_i} \right)^{1/2} + \sum_l \delta_{il} D_l) \quad (14)$$

and input demand equations



$$\frac{1}{y_1} \frac{\partial \pi}{\partial p_j} = -x_j = (\beta_{jj} E + \sum_{i \neq j} \beta_{ij} \left(\frac{p_i}{p_j}\right)^{1/2} + \sum_l \delta_{jl} D_l) . \quad (15)$$

These supply and demand functions describe the optimal adjustment of outputs and inputs in response to changes in output and input prices.

Differentiating the profit function with respect to the fixed output ( $y_l$ ) we obtain the shadow price

$$\frac{\partial \pi}{\partial y_l} = \lambda_l^p = \left( \sum_i \sum_j \beta_{ij} (p_i^{1/2} p_j^{1/2}) + \sum_i \sum_l \delta_{il} p_i D_l \right) \quad (16)$$

To assess the economic consequences of reallocating quota to the commercial sector, we make the following additional assumptions. First, we conjecture that the quota increase would materialize in the form of trip limit increases (in proportion to the proposed quota change) since the length of the fishing season is not binding (while quota is available). Second, following Holzer and McConnell's (2014) recommendation we utilize the mean marginal WTP as proxy of net benefits since the current management regime does not ensure that fishermen who value the resource the most will have preferential access to it. In addition, we posit that fishermen would exhaust the added quota as long as the dockside revenue exceeds the marginal cost of harvesting under the cost minimization behavioral model. We also assume that the proportion of the landings that meet or exceed a given trip limit would be the same for the various reallocation proposals under the profit maximizing behavioral model.<sup>2</sup> These last two assumptions become more tenuous for the larger reallocation proposals (5%-20%).

Finally, we estimate the net benefit to the commercial sector for a given reallocation proposal by weighing the lambdas from equations (12) and (16) by the share of current quota taken by each benefit maximizing strategy (cost minimization vs. profit maximization) and multiply them by the proposed quota increase.

$$\Delta \text{ Net Benefit} = \lambda_1^c \left( \frac{h_t^{\text{cost min}}}{\text{Quota}_t} \right) \Delta \text{Quota} + \lambda_1^p \left( \frac{\text{Quota}_t - h_t^{\text{cost min}}}{\text{Quota}_t} \right) \Delta \text{Quota} \quad (17)$$

king mackerel trip landings  $\geq$  king mackerel trip limit

Note that because of the profit maximizing behavioral assumption we only multiply the shadow price by the harvest of those trips that met or exceeded the trip limit (i.e., binding constraint).

<sup>2</sup> For clarity, in the analysis we adopt the higher trip limit available, when multiple trip limits exist in one management area.

## Results

As noted earlier because we only had information on fuel consumption for about 20% of the fleet, we imputed fuel consumption for the remaining fleet using fishing effort and vessel characteristics as explanatory variables. The fuel consumption equations were estimated using ordinary least squares (OLS). The  $R^2$  for the fuel equations ranged from 0.01 to 0.73. The system of input demand and output supply functions were jointly estimated using iterated seemingly unrelated regression (ITSUR).<sup>3</sup> The generalized  $R^2$  for the system of equations ranged from 0.09 to 0.41.<sup>4</sup> Marginal cost estimates range from \$0.12/lbs gw to \$1.50/lbs gw whereas king mackerel shadow prices range from \$2.02/lbs gw to \$33.54/lbs gw. Some of the shadow price estimates are high and should be viewed with caution (e.g., Western zone, Eastern zone, Northern subzone).

The preliminary analysis suggests that increasing the commercial quota by 2% would result in an increase in net benefits (i.e., quasi-rent or revenues minus fuel costs and the opportunity cost of labor) of \$92,532 to the commercial sector whereas a 20% increase would result in a larger net increase of \$925,328 (Table 3).

**Table 3.** Inflation-adjusted net benefits from quota reallocation proposals (2014=100).

Zones	Subzone	Gear Sector	Added net benefits (\$) from increasing the baseline quota by			
			2%	5%	10%	20%
<b>Western</b>			35,214	88,035	176,070	352,140
<b>Eastern</b>	East Coast		29,935	74,839	149,677	299,356
	Northern		7,917	19,792	39,586	79,171
	Southern	Hook and line	7,907	19,767	39,535	79,069
		Gillnet	11,559	28,898	57,796	115,592
<b>Grand Total</b>			92,532	231,331	462,664	925,328

<sup>3</sup> Due to the multiplicity of area-gear combinations, we do not report parameter estimates; however, these are available from the authors.

<sup>4</sup> The generalized  $R^2$  was estimated as  $1 - \exp[2(L_0 - L_m)/N]$ , where  $L_0$  ( $L_m$ ) is the sample maximum of log-likelihood when all slope coefficients equal zero (unconstrained) and  $N$  is the sample size.

## Appendix B-B. Recreational Sector Analysis

Research suggests that anglers value both keeping and releasing king mackerel (Carter and Liese, 2012). Therefore, the recreational sector would forgo economic benefits if un-harvested (or “surplus”) quota is reallocated to the commercial sector because the quality of the fishing experience could be diminished by the lower catch rates. The timing and significance of this “stock effect” could vary depending on the amount of the surplus recreational ACL that is reallocated and harvested by the commercial sector. We do not expect that the stock effect to be strong enough in the initial years following any of the alternative reallocations to result in a reduction in recreational catch rates. Consequently, there would be little, if any, loss in economic value to the recreational sector in the first year following even the largest (20%) proposed reallocation to the commercial sector.

### Potential Longer Term Effects of Reallocation Policies

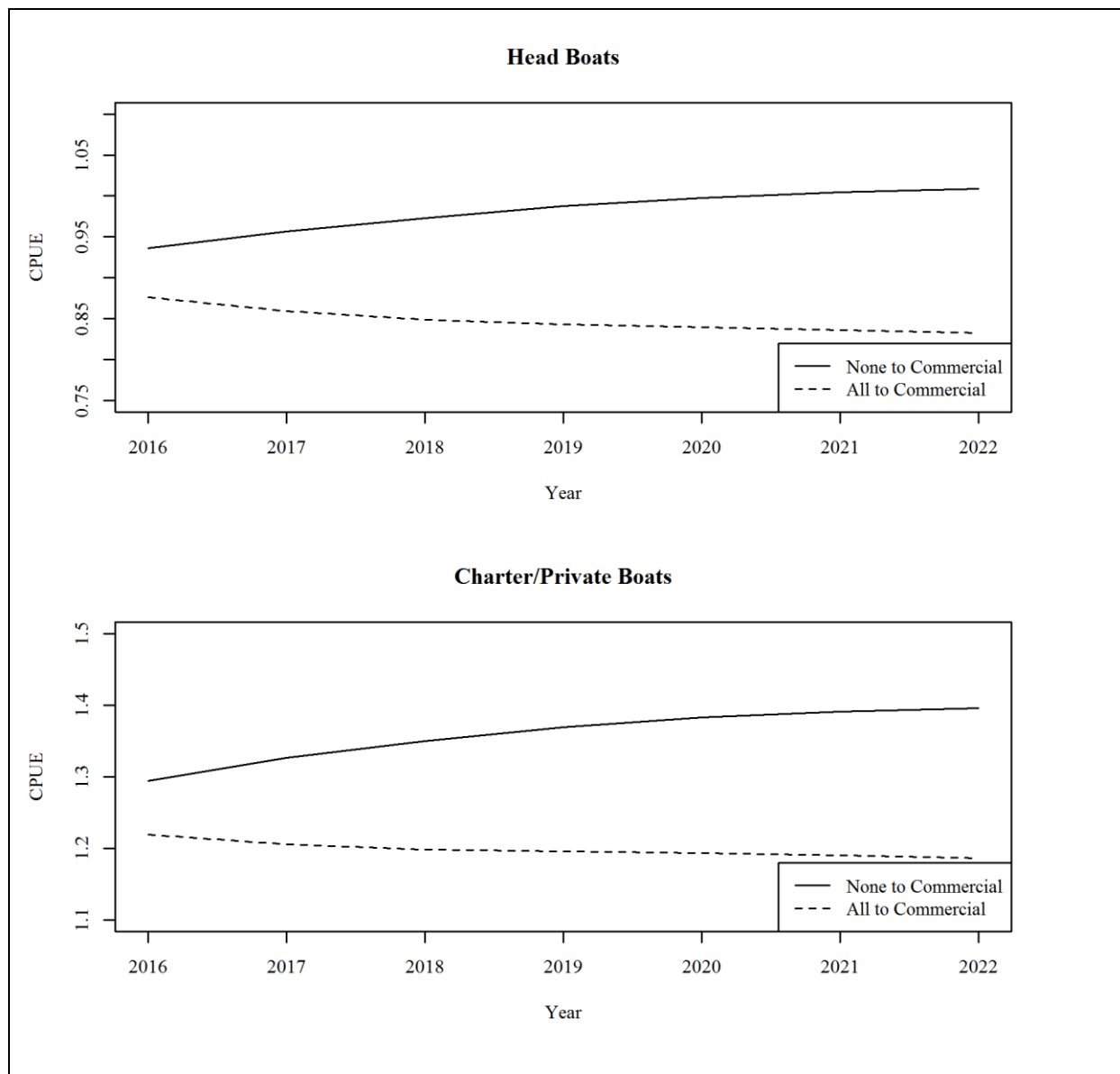
We do not have the information at present to calculate the long-term foregone economic value in the recreational sector associated with reallocation policies. However, the current king mackerel stock assessment model (SEDAR 38) can be used to simulate the potential change in catch rates.<sup>5</sup> The two cases we simulate are purely illustrative and are not directly related to any of the reallocation policies currently under consideration. The first case is the situation where none of the current recreational ACL surplus is reallocated to the commercial sector and the second case considers the situation where all of the current recreational ACL surplus is reallocated to the commercial sector. The simulations are described in Appendix C.

The simulated king mackerel catch rates results for the two cases from 2016 to 2022 are shown in Figure 1. The graph shows that the catch rates for both recreational fishing fleets are expected to be lower if the surplus recreational ACL is reallocated to the commercial sector. The difference between catch rates for the two cases grows for about seven years and then stabilizes in equilibrium at around 20%. The difference in catch rates widens over time because the fish not reallocated to the commercial sector are left to accumulate in the water so that fishing is more effective.

Note that the results from the stock assessment model simulations cannot readily be used to calculate potential changes in economic value to the recreational sector that are comparable with the estimates calculated for the commercial sector. The commercial sector results are based on changes from the existing king mackerel ACL and the geographic definition of the stock structure (i.e., the mixing zone) used in the previous stock assessment. The simulations performed for the analysis of the recreational sector catch rates used the most recent stock assessment model (SEDAR 38) that uses an updated stock structure and the ACL stream. The results of SEDAR 38 have not yet been used to set new ACLs or to redefine the stock structure for regulator purposes.

---

<sup>5</sup> The SEDAR 38 king mackerel stock assessment model is documented at: <http://sedarweb.org/sedar-38>.



**Figure 1.** Catch rates (CPUE) when all or none of the surplus recreational ACL is reallocated to the commercial sector.

## Appendix B-C. Effects on recreational CPUE of reallocation of the recreational of Gulf of Mexico king mackerel under-age to commercial sector

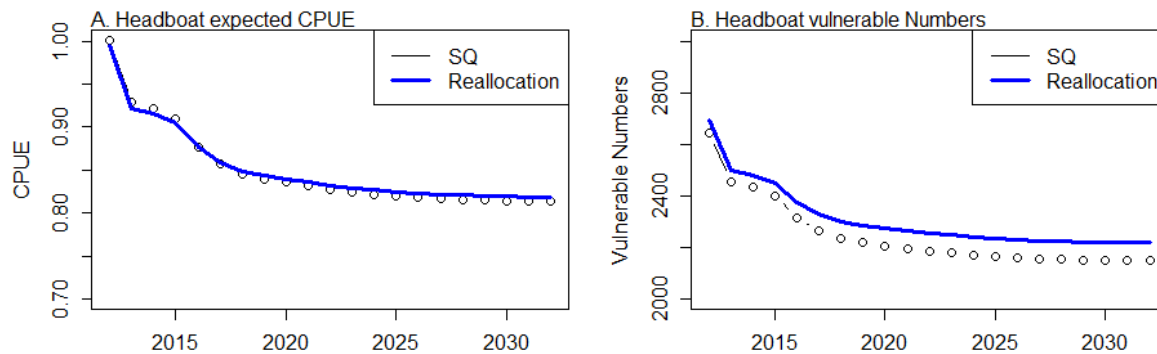
In recent years (fishing years 2011-2013, [http://sero.nmfs.noaa.gov/sustainable\\_fisheries/acl\\_monitoring/](http://sero.nmfs.noaa.gov/sustainable_fisheries/acl_monitoring/)) the recreational fishery for king mackerel in the Gulf of Mexico has only caught ~38% of its annual catch limit. Projections of the SEDAR 38 assessment assume that the recreational fishery will catch its ACL (Status quo scenario, in this analysis). However, there is the potential that the recreational underage could be reallocated to the commercial handline and gill net fishery (Reallocation scenario). This analysis evaluates the estimated impact on recreational catch per unit effort (CPUE) if such a reallocation occurs.

The analysis was conducted by projecting the population forward in time to year 2030 and then estimating the difference in expected recreational CPUE under the status quo allocation of landings and under the reallocation scenario. The analysis proceeded as follows:

1. Project the SEDAR 38 Base model forward to 2030 at  $F_{SPR30}$  to obtain the equilibrium (after all transient cohort effects have passed) allocation of landings by weight. The resulting allocation is 40:60 commercial:recreational
2. Assume that the recreational fleet only catches 38% of their allocation ( $0.60 \times 0.38 = 23\%$ ). Reallocating the remainder of the retained biomass to the commercial fleet's results changes the allocation to this sector to 77%. This reallocation is achieved in the projections by assigning the commercial (handline and gillnet) and recreational (headboat and charter/private) to separate allocation groups and projecting a 77:23 reallocation. This reallocation achieves the same total ACL as the base projections but reallocates the retained yield.
3. Calculate the expected CPUE for the two recreational fleets under the status quo and reallocation scenarios.
4. The expected CPUE for each scenario was obtained by multiplying numbers at age  $x$  selectivity at age  $x$  catchability

### Comparison between the Stock Assessment Status Quo and the Reallocation Scenarios

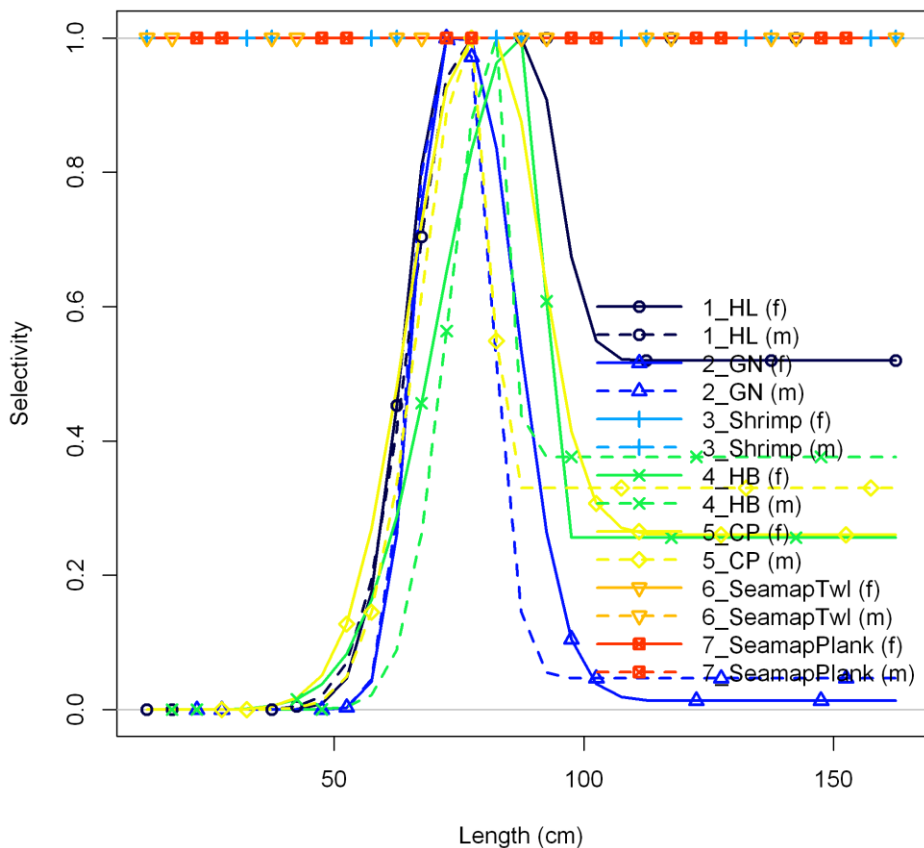
Under the Reallocation scenario, the expected equilibrium CPUE was ~0.7% higher for the headboat fleet (Figure 1.A) and ~1.3% higher for the charter/private fleet (not shown). This was due to the higher projected numbers of vulnerable fish (Figure 1.B). Note that the decline, under both scenarios, in the numbers, of vulnerable fish reflects the fishing down of the population currently above the  $B_{MSY}$  proxy towards the target level. This reduces the total fish available to each fleet, reducing the expected CPUE.



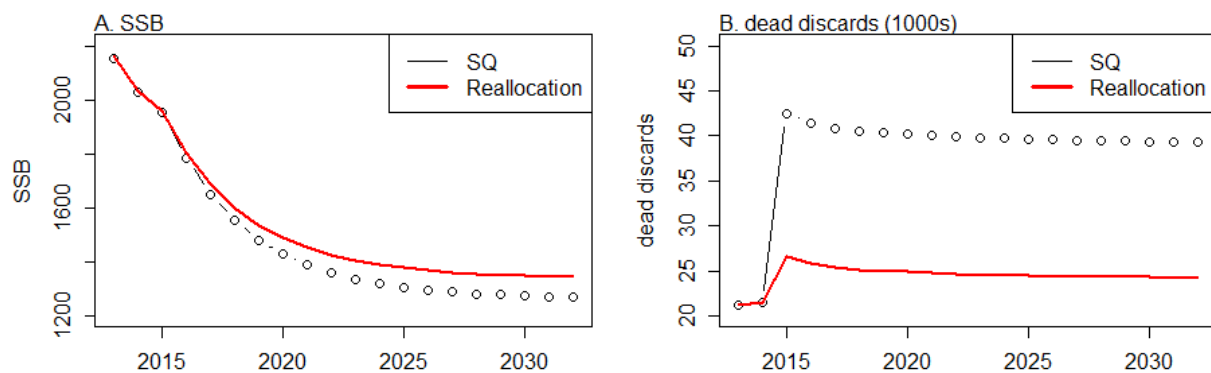
**Figure 1.** Projected CPUE (A) and vulnerable numbers (B) for headboat fleet under the status quo and reallocation scenarios.

The differences in expected CPUE are very minor and unlikely to be detectable. The major reason that the differences are very minor are that the selectivities for the different fleets are relatively similar (Figure 3) indicating that reallocation between the recreational and commercial fleets results in little change in the overall pattern of fishing mortality at age or size. Furthermore, while the recreational fishery has slightly higher levels of dead discards per landed fish than the commercial fishery, the reallocation does not greatly alter the total levels of discards. What minor differences exist between the two scenarios is likely a result of a very slightly higher level of SSB (Figure 3.A) as a result of a small the reduction (~15,000 per year) reduction in dead discards (Figure 3.B).

Length-based selectivity by fleet in 2012



**Figure 2.** Estimated length-based selectivities for the each fleet from SEDAR 38 base model for Gulf of Mexico



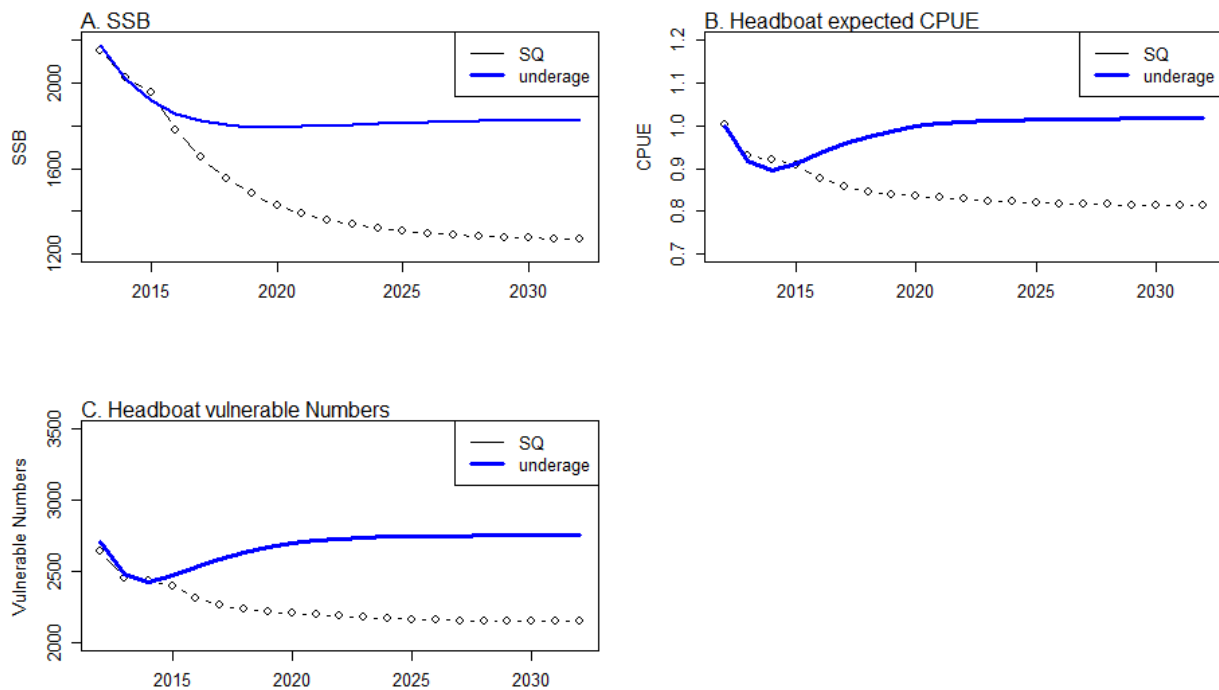
**Figure 3.** Estimated SSB (A) and dead discard (B) trends for the status quo and reallocation scenarios

## Comparison between the Current Underage and the Reallocation Scenarios

If the current recreational fleet underage was perpetuated into the future then the overall ACL would not be caught. This would allow the population to remain at higher than target levels (Figure 4) into the future and impact CPUE. To evaluate the impact on CPUE the recreational underages were projected into the future by reducing the equilibrium fishing mortality rates for each recreational fleet to 38% of their original value and projecting forward with the following levels of fixed F.

	Handline	Gillnet	Shrimp	Headboat	Charter/Private
Equilibrium F	0.069	0.060	0.133	0.014	0.239
Rec reduced by 38%	0.069	0.060	0.133	0.005	0.091

This resulting equilibrium CPUE values were 21% (headboat) and 25% (private recreational, not shown) higher than expected values under the status quo scenario (Figure 4).



**Figure 4.** Projected SSB (A) CPUE (B) and numbers (C) for headboat fleet under the status quo and under the recreational underage scenario.

## Appendix B References

Carter, D.W. and C. Liese. 2012. The Economic Value of Catching and Keeping or Releasing Saltwater Sportfish in the Southeast USA. *North American Journal of Fishery Management*, 32: 613-625.



Holzer, J. and K. McConnell, 2014. Harvest Allocation without Property Rights. [\*Journal of the Association of Environmental and Resource Economists\*](#), 1:209-232.

Parks, R. W. 1971. Price Responsiveness of Factor Utilization in Swedish Manufacturing, 1870-1950. *Review of Economics and Statistics*, 53:129-139.

Squires, D.E. 1987. Long-Run Profit Functions for Multiproduct Firms. *American Journal of Agricultural Economics*, 69:558-569.

Walden, J., J. Agar, R. Felthoven, A. Harley, S. Kasperski, J. Lee, T. Lee, A. Mamula, J. Stephen, A. Strelcheck, and E. Thunberg. 2014. Productivity Change in U.S. Catch Shares Fisheries. U.S. Dept. of Commerce, *NOAA Technical Memorandum NMFS-F/SPO-146*, 137 p.