

Tab A, No, 10(a)



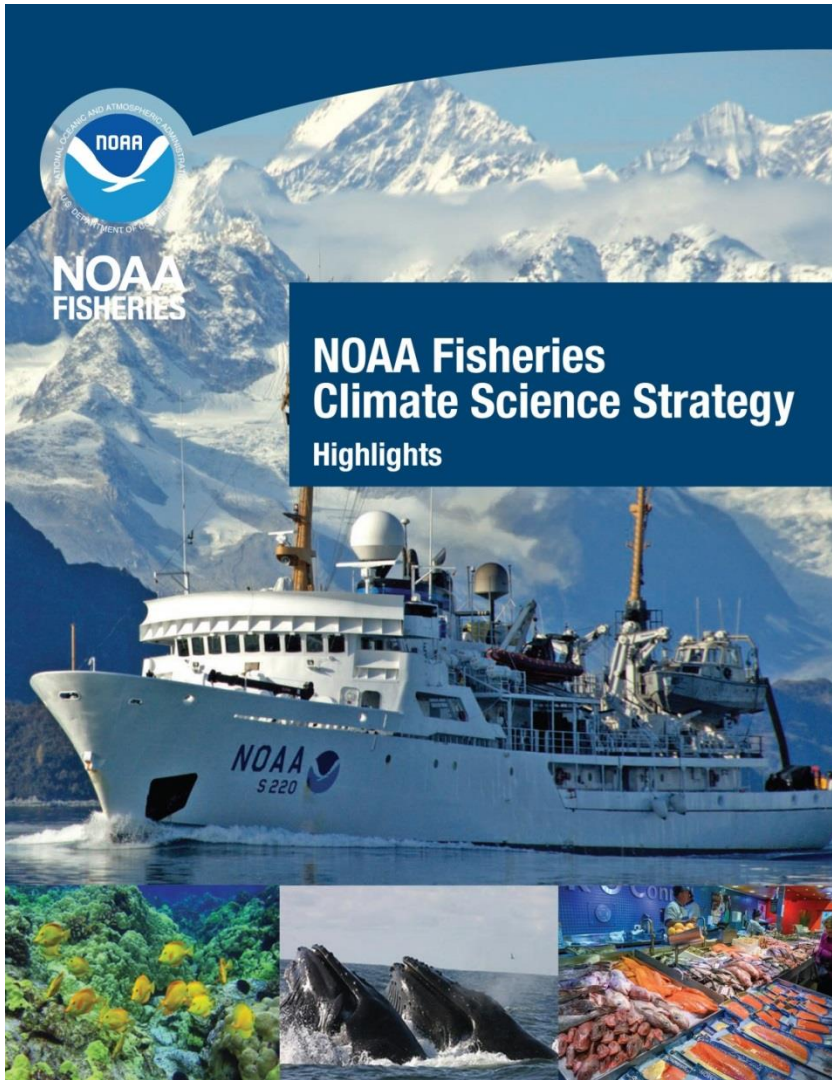
**NOAA
FISHERIES**

Gulf of Mexico Climate Science Regional Action Plan (*DRAFT*)

Sunny Snider
June 2016

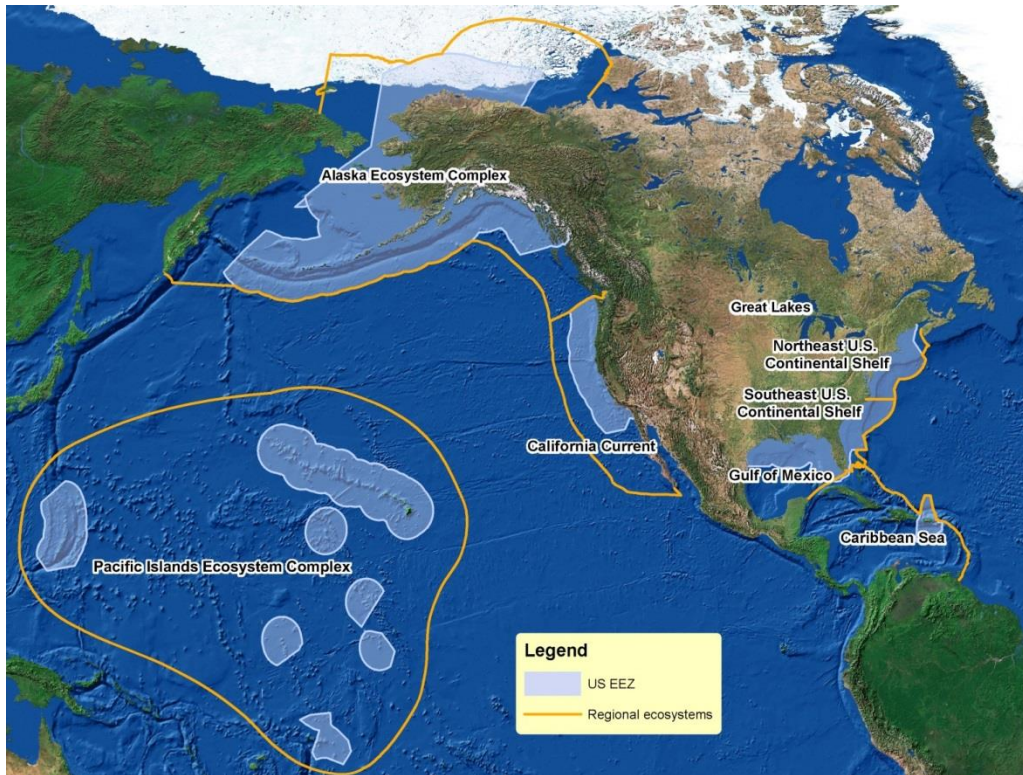


NOAA FISHERIES



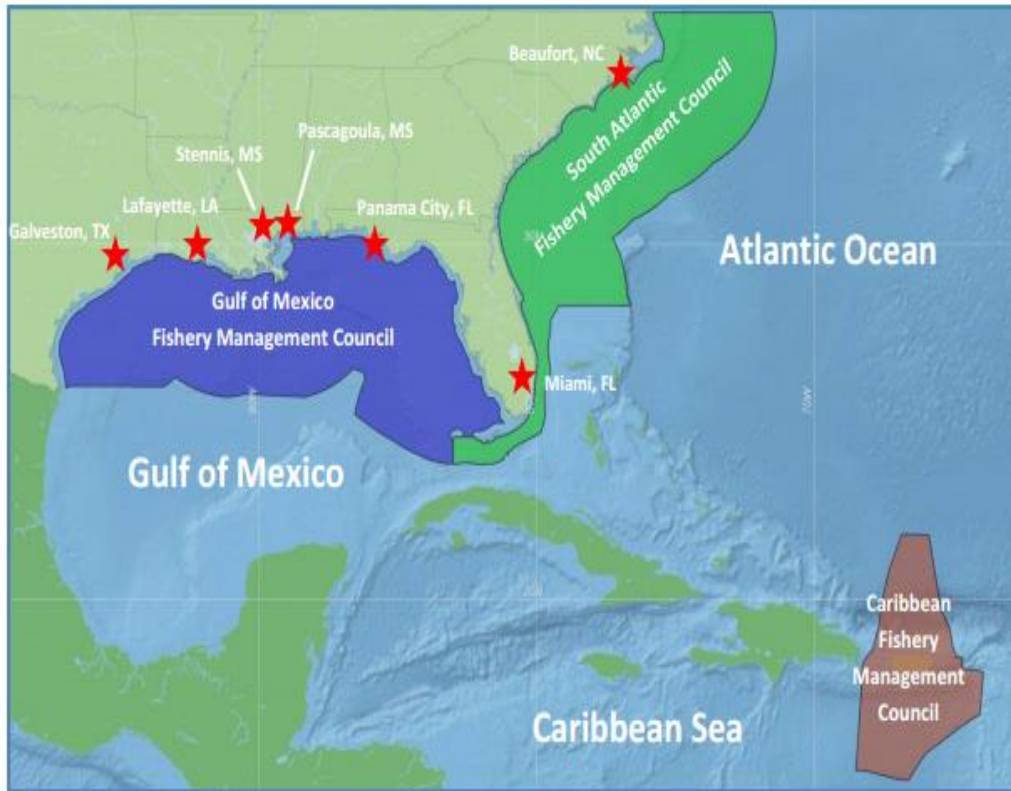
Increase the production,
delivery and use of climate-
related information
in fulfilling
NOAA Fisheries mandates

Regional Action Plans



- Develop with key partners Councils, States, & other partners
- Customize for each region
- Inform future planning and budgeting
- Build and expand partnerships and leverage resources

Regional Action Plans

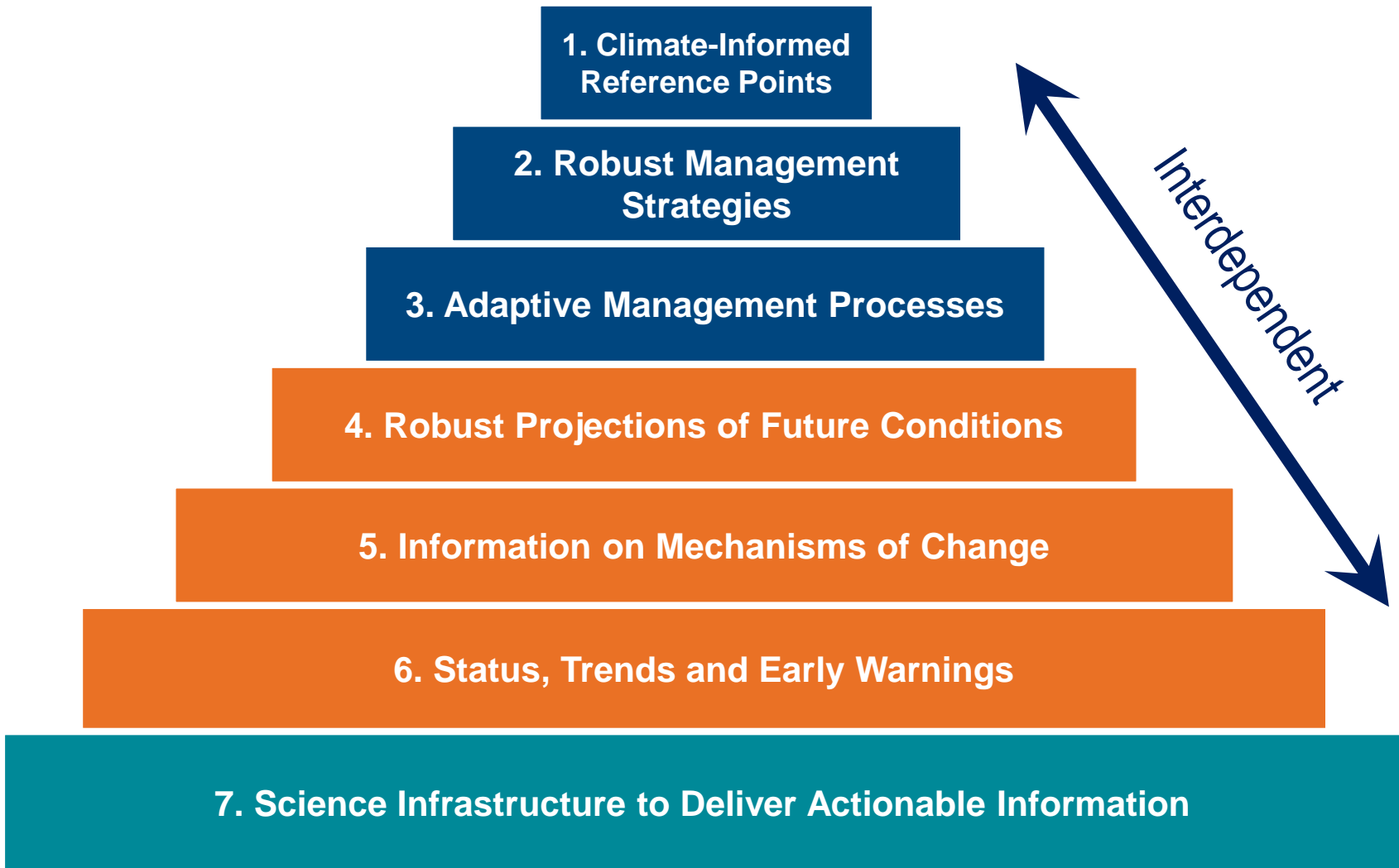


- Develop with key partners Councils, States, & other partners
- Customize for each region
- Inform future planning and budgeting
- Build and expand partnerships and leverage resources

Gulf of Mexico Regional Action Plan

- *Draft* plan - a great time for input!
- Scheduling, staging, prioritizing actions
- Thorough assessment of funding requirements
- Identify additional partners







7. Science Infrastructure to Deliver Actionable Information

- Strategic planning for climate science
- Build and strengthen capacity
- Infrastructure
- Strengthen partnerships
- Citizen Science

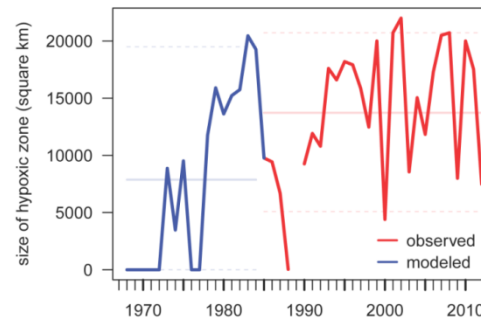
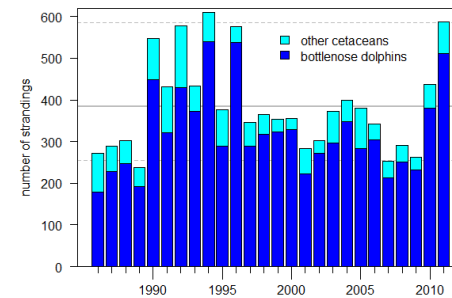
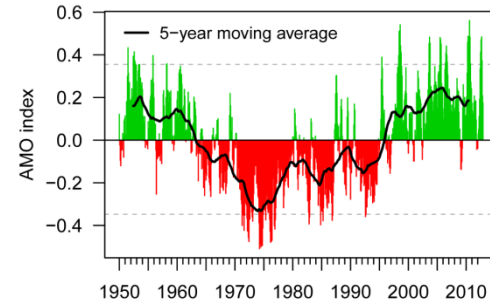


NOAA Ship *Gordon Gunter*



6. Status, Trends and Early Warnings

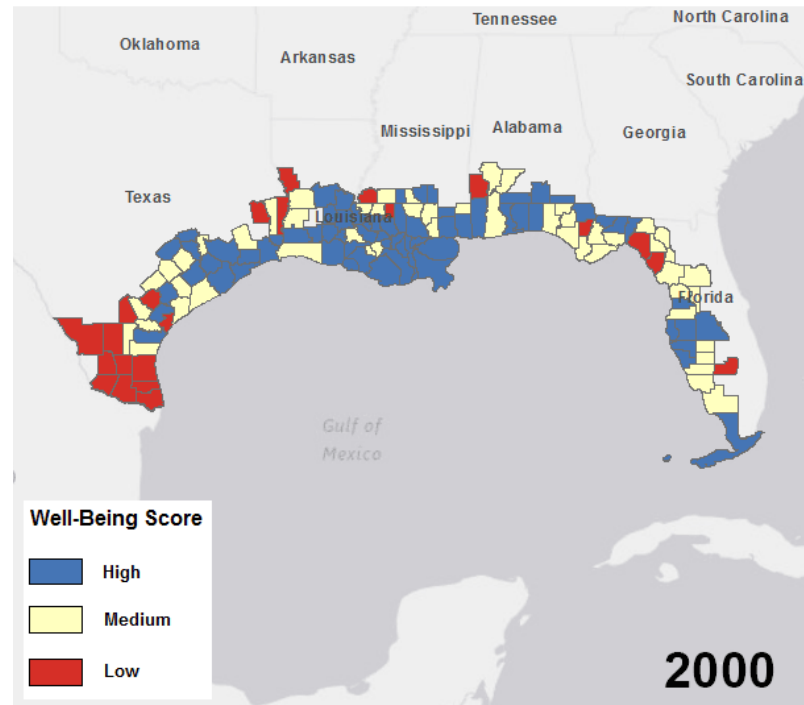
- Critical baseline data
- Ecosystem Status Report
- Early warning toolbox





5. Information on Mechanisms of Change

- Vulnerability assessments
- Research & monitoring

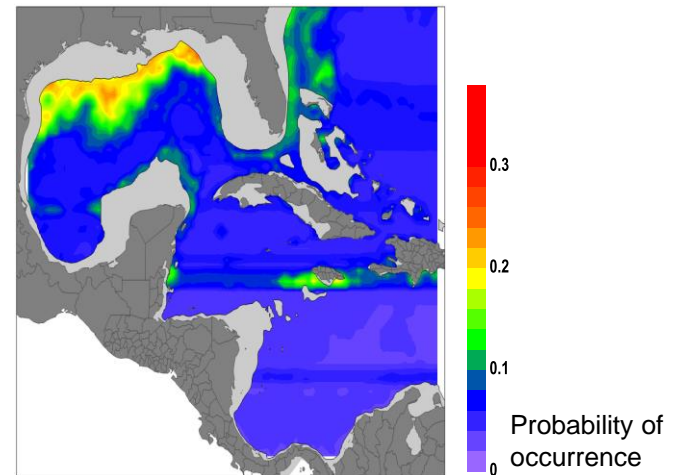




4. Robust Projections of Future Conditions

- Predictive modeling
- Application of existing models
- Standard modeling toolbox

Larval habitat: 2090s RCP 8.5



Muhling et al. 2015




May 2012 Bluefin tuna larval cruise, photo by K. Davis



3. Adaptive Management Processes

- Quantify management tradeoffs under climate change scenarios
- Respond to events in real time
- Strengthen dialogue, e.g., what trends are fishermen observing?



		Buffer between OFL and ACL	
		Large	Small
Predicted future stock productivity	High		
	Low		

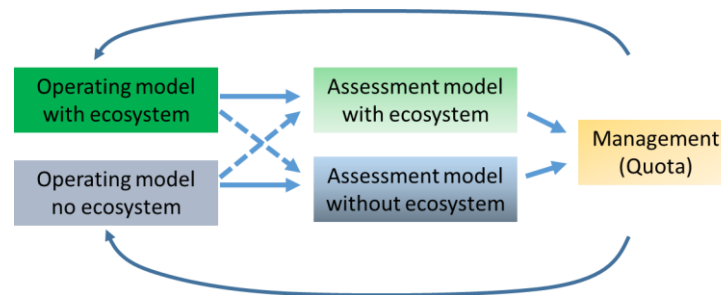
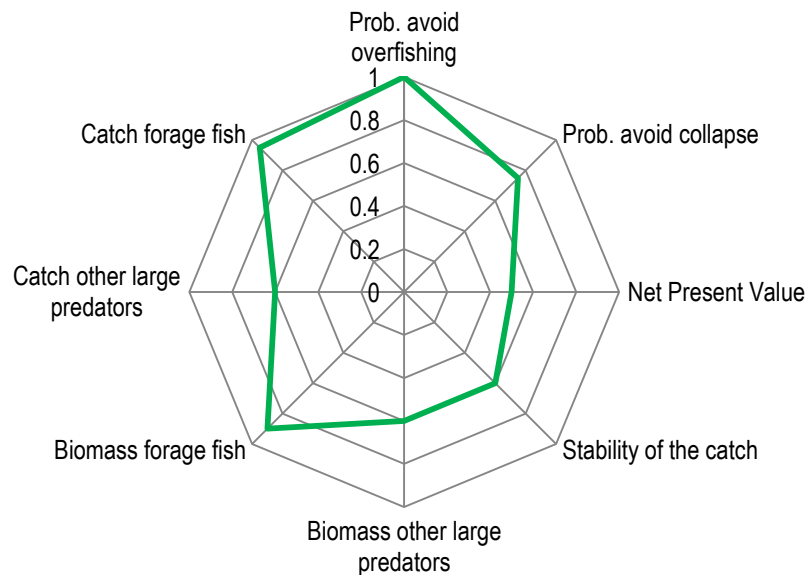


Marine Resource Education Program (Tampa, FL)



2. Robust Management Strategies

- Management strategy evaluations
- Define management objectives collaboratively
- Ecosystem Considerations Summary (e.g., AKFSC)





1. Climate-Informed Reference Points



May 2012 Bluefin tuna larval cruise, photo by Katie Davis

- Consider climate as we develop reference points
- Share ideas, models, approaches among regions

Next Steps

- Refine action items
- Incorporate input from Councils, States, and other partners
- Public comment (summer 2016)
- Finalize all regional plans by October 2016

Acknowledgements



NOAA
FISHERIES

Mandy Karnauskas, John Lamkin, Roldan Muñoz, Eric Hoffmayer, John Walter, Shannon Calay, John Quinlan, David Carter, Akbar Marvasti, Matt McPherson, Lance Garrison, Chris Sasso, Margaret Miller, Heidi Lovett, Karla Gore, Mike Jepson, Jennifer Cudney, Allison Moulding, Chris Kelble, Sang-ki Lee

Thanks to all colleagues who have reviewed and provided input!

Questions? Please email Sunny.Snider@noaa.gov



NOAA FISHERIES