

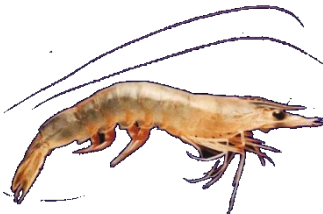


**NOAA**  
**FISHERIES**

# Review of the Texas Closure for 2016

Rick A. Hart, Ph.D.  
NOAA Fisheries Service  
Southeast Fisheries Science Center  
Galveston Laboratory  
Galveston, TX USA

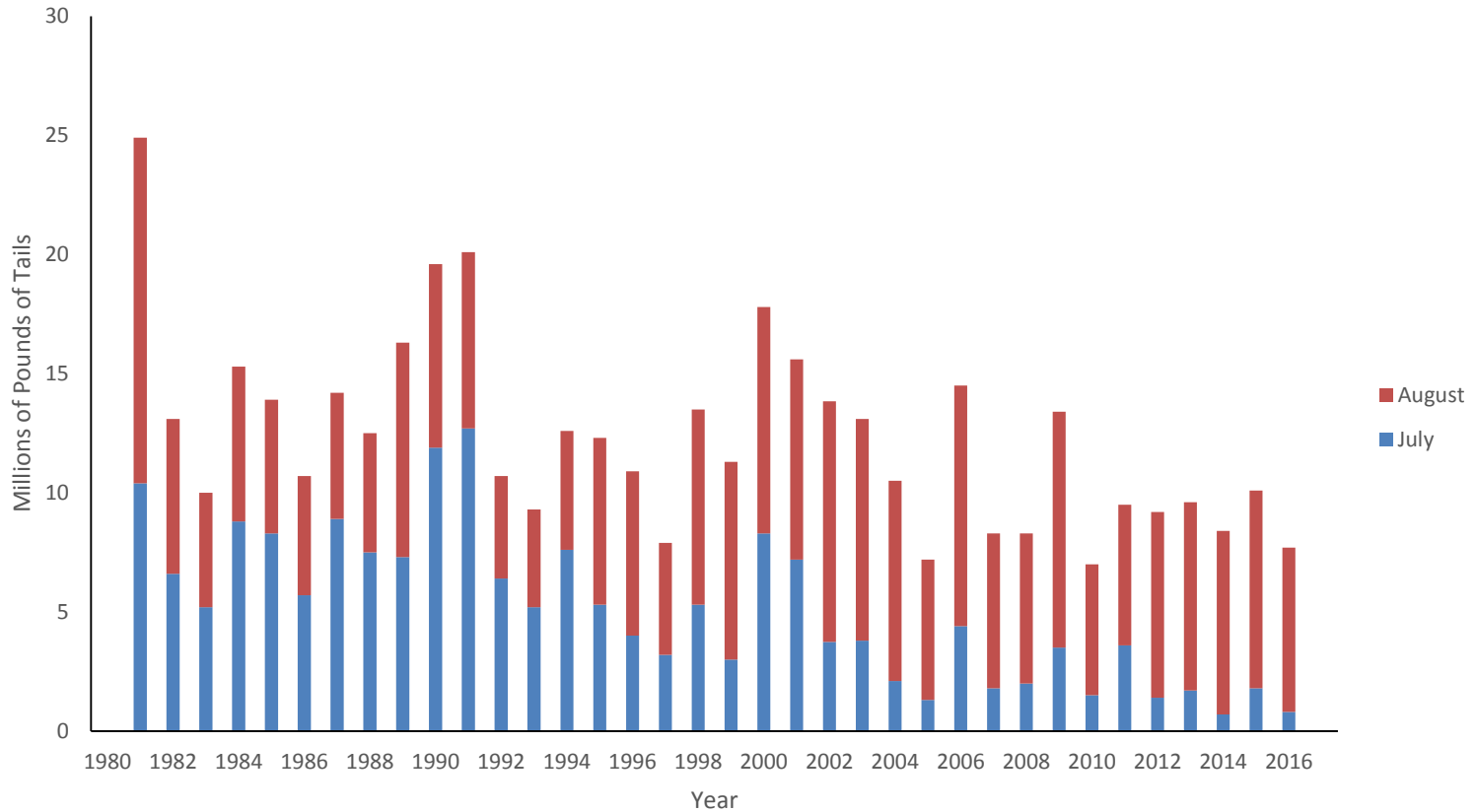
Gulf of Mexico Fisheries Management Council  
April 2017



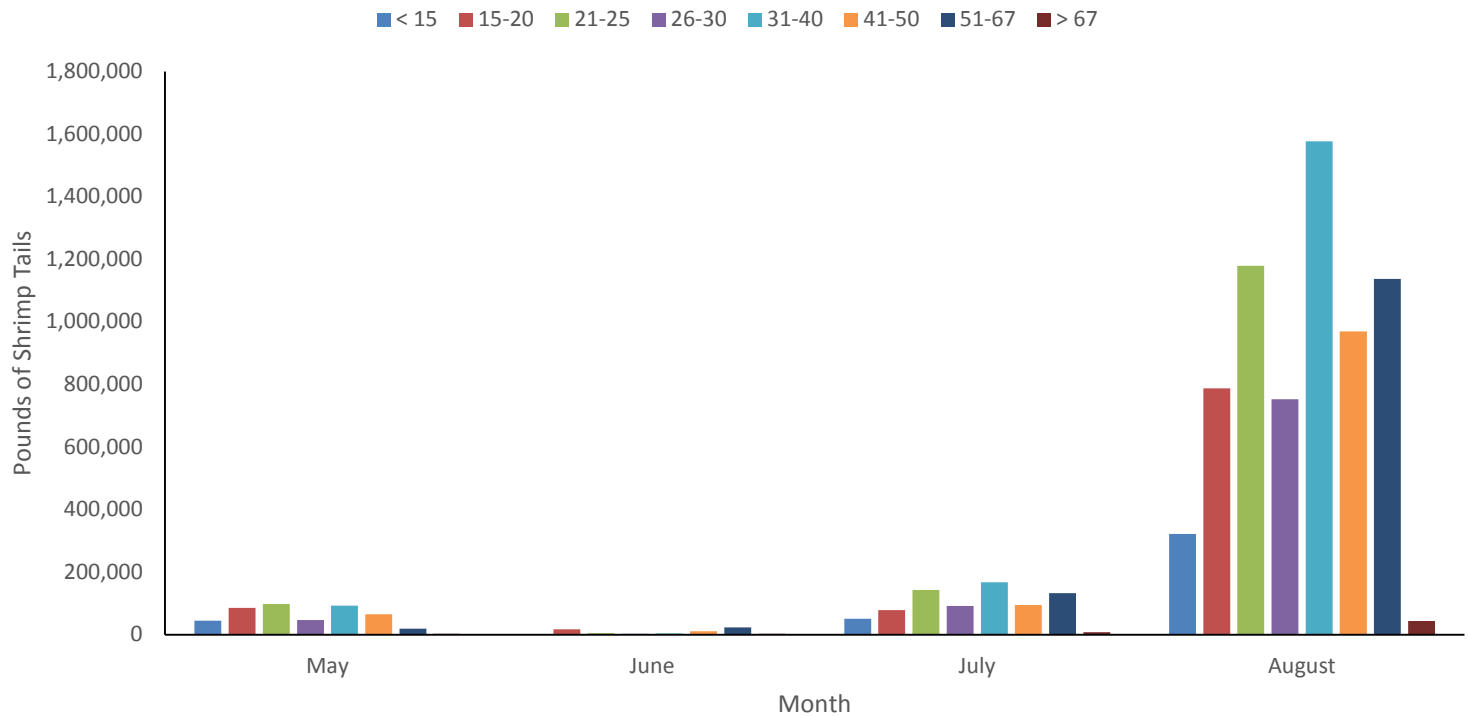
# Closure

The GMFMC Shrimp FMP implemented in 1981 for the EEZ fishery

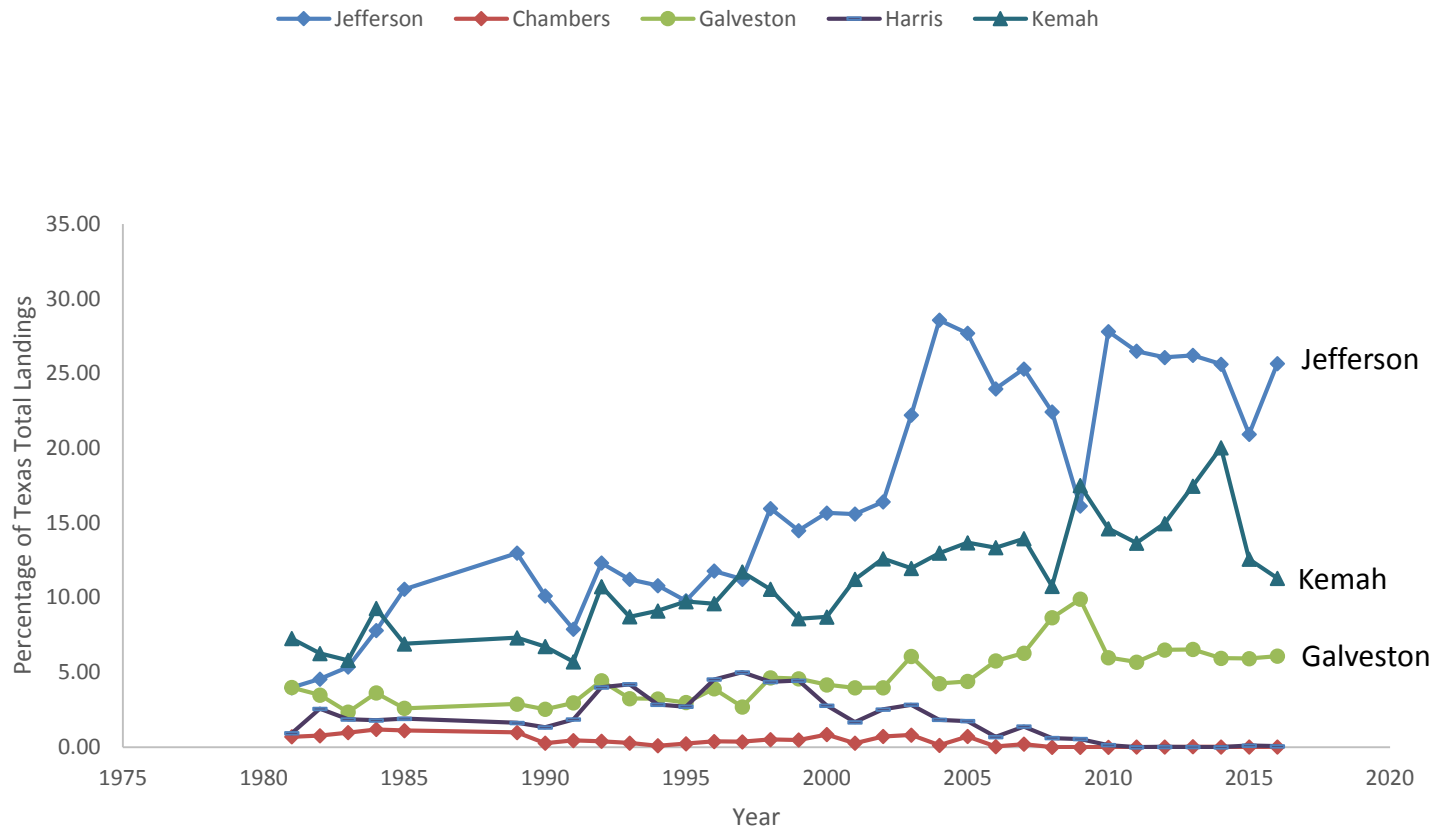
- Goal was to increase the yield of brown shrimp harvested from offshore Texas waters
- Historically the closure is from Mid-May to Mid-July
- Since 1990 the near shore < 4 fathoms area has also been closed



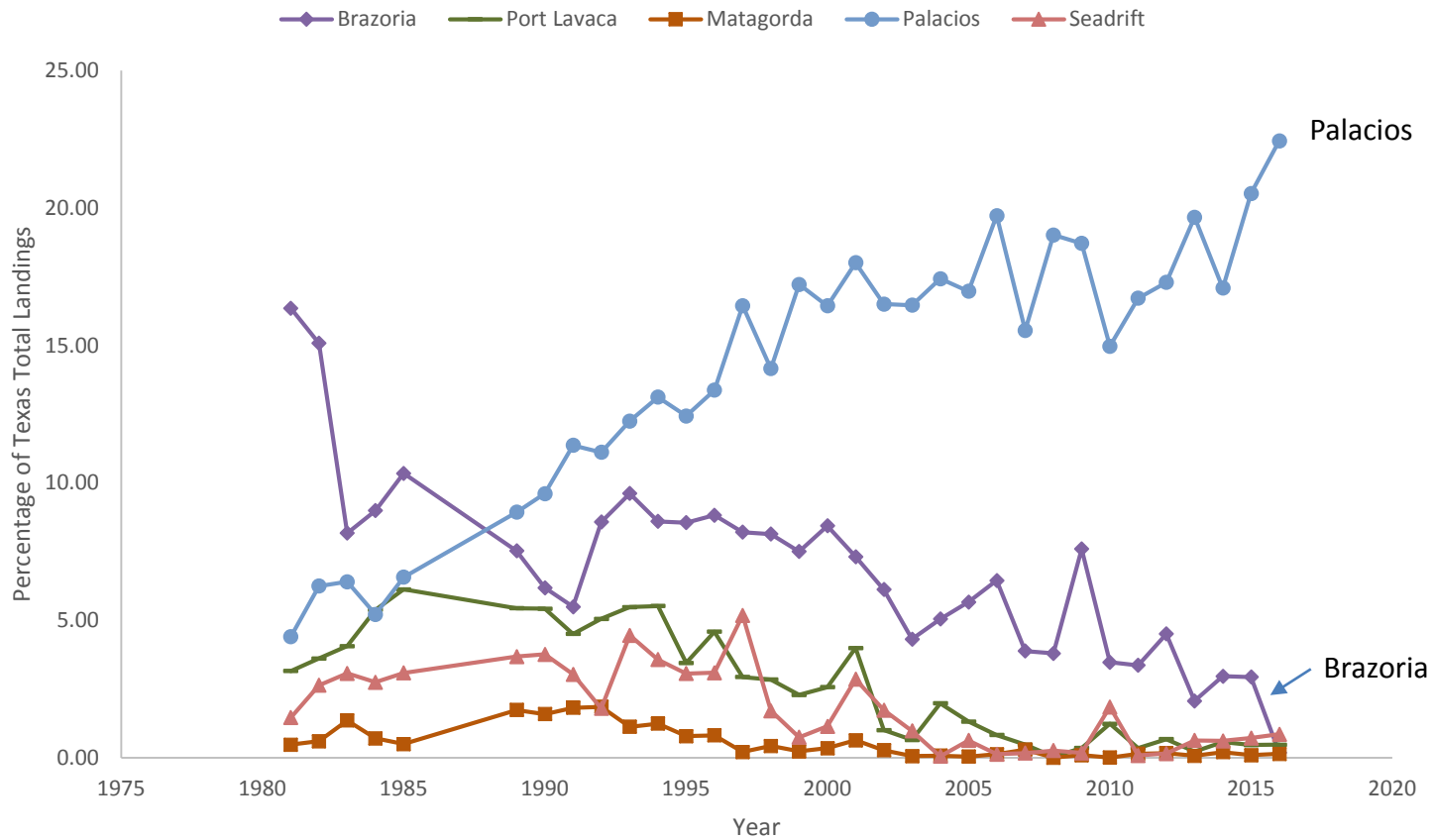
Texas brown shrimp offshore catch for July and August, 1981-2016.



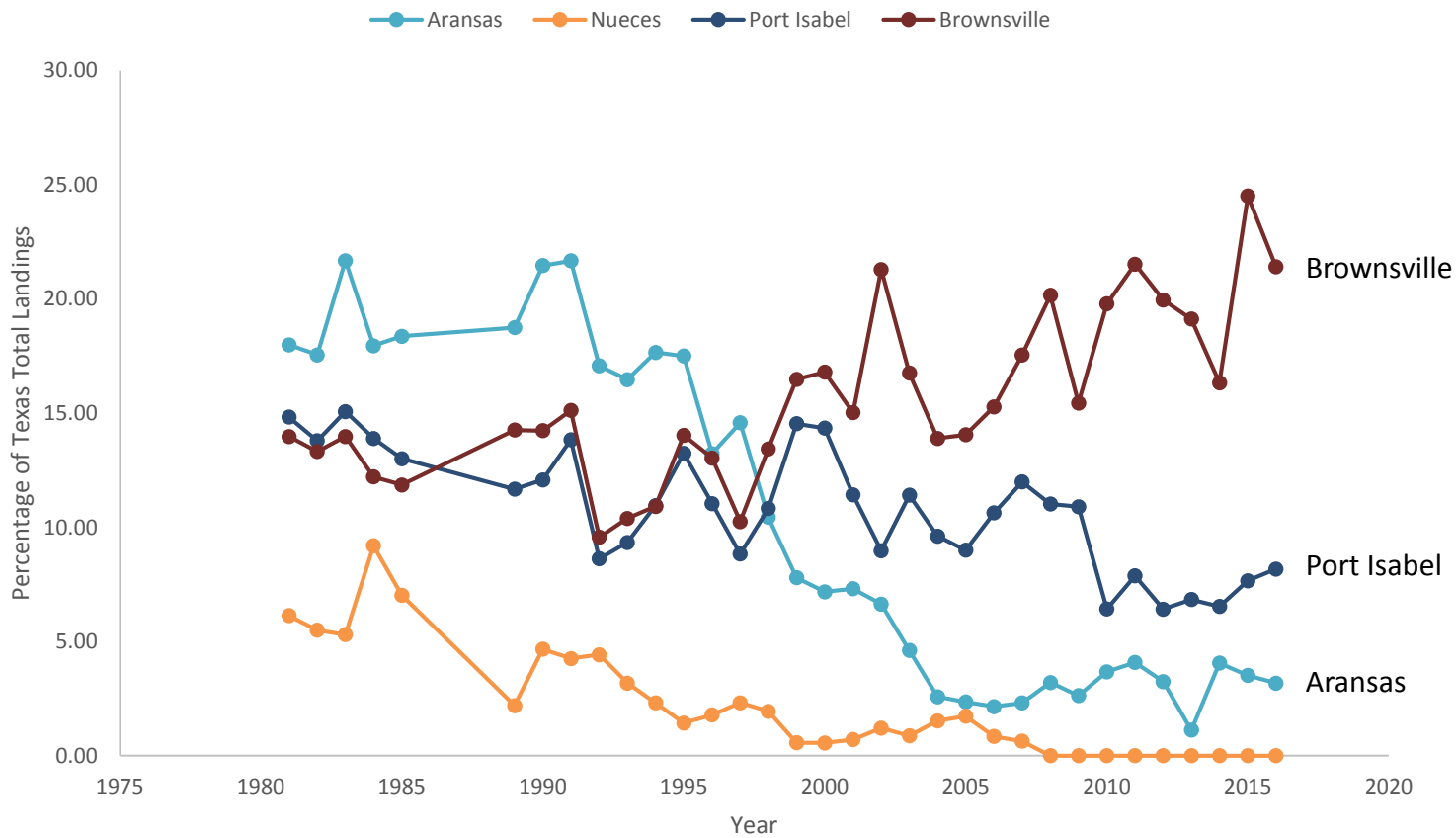
Monthly brown shrimp offshore shrimp catch for May – August, 2016.



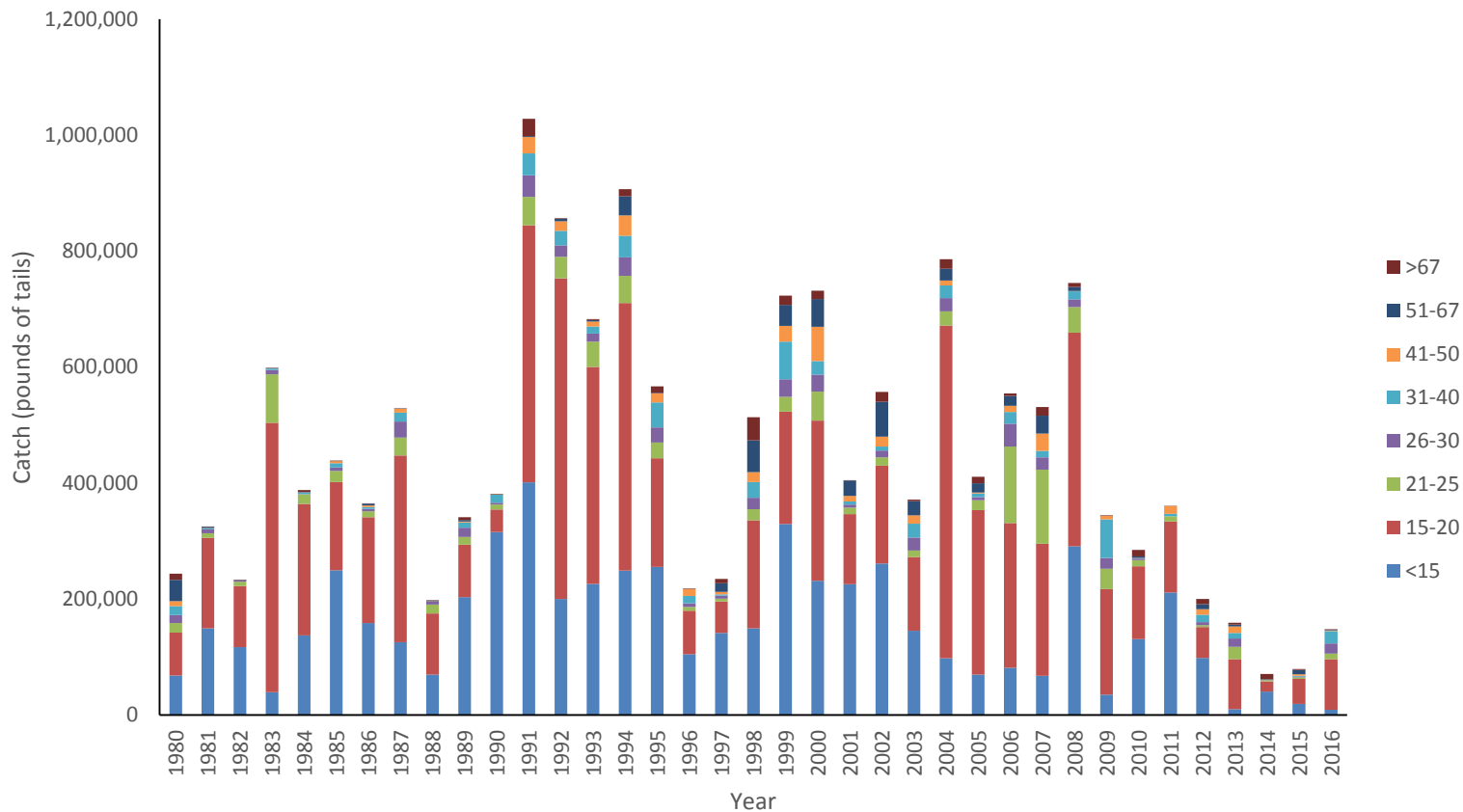
Landings by upper Texas ports 2016.



Landings by middle Texas ports 2016.

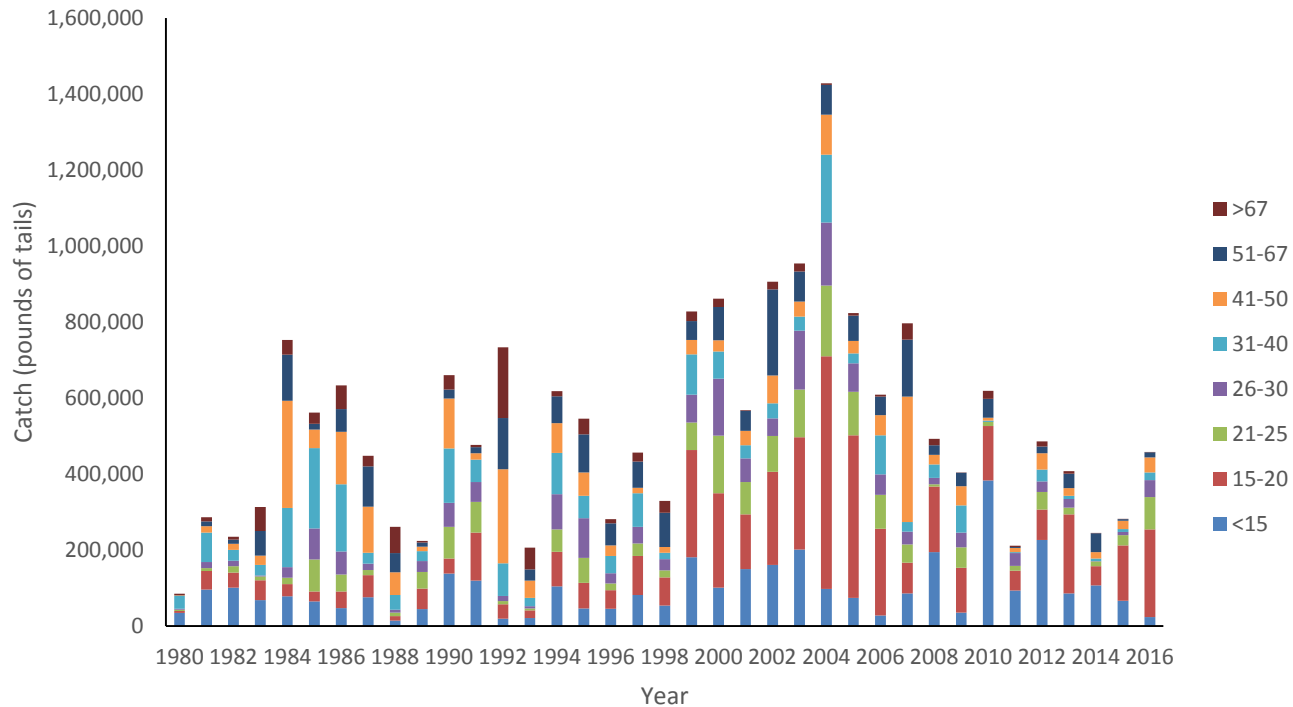


## Landings by lower Texas ports 2016.



## July offshore white shrimp catch for 2016.





## August offshore white shrimp catch for 2016.

# Summary

- Environmental factors important for growth and abundance of shrimp – above average this year
- Brown shrimp catch off Texas coast below long-term average
- Brown shrimp size off Texas – about 0.7% in the >67 count size category

# Summary

- Some changes in shrimp landings distribution in Texas ports
- Increase in pounds yield with 2016 closure between 0 and 13%
- White shrimp catch off Texas below average during both July and August

