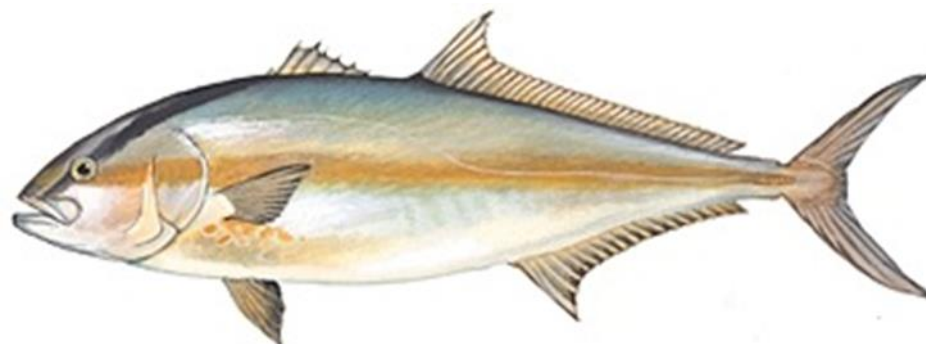


# Standing and Reef Fish SSC Report

Tab B, No. 7(a)(2)



## **Greater Amberjack SEDAR 33 Stock Assessment Update**



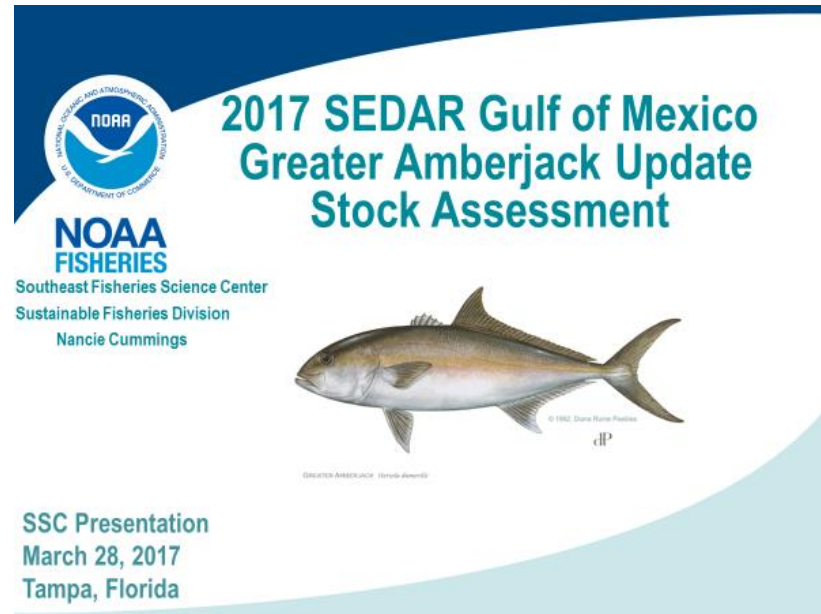
**Gulf of Mexico Fishery Management Council Meeting**

April 3-6, 2017

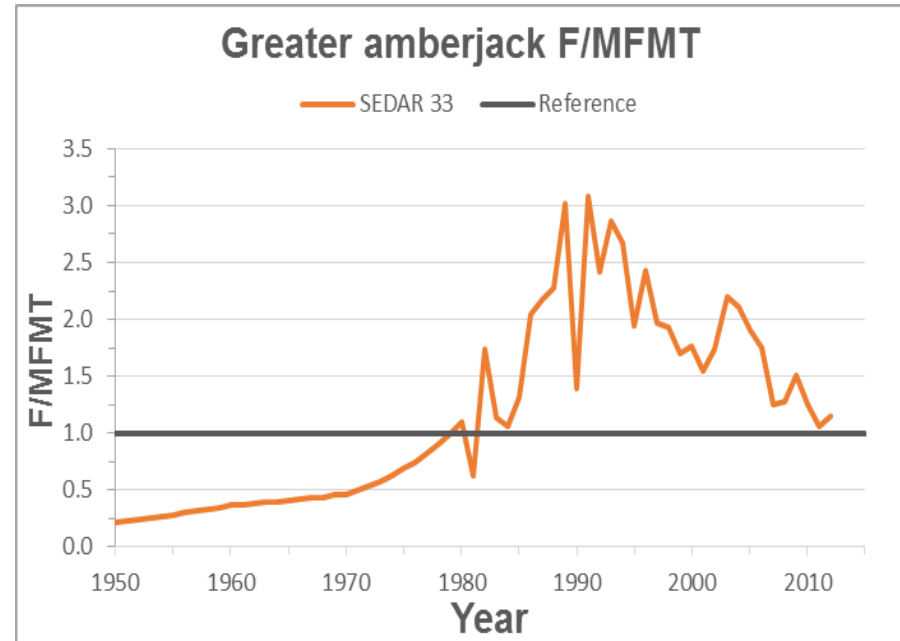
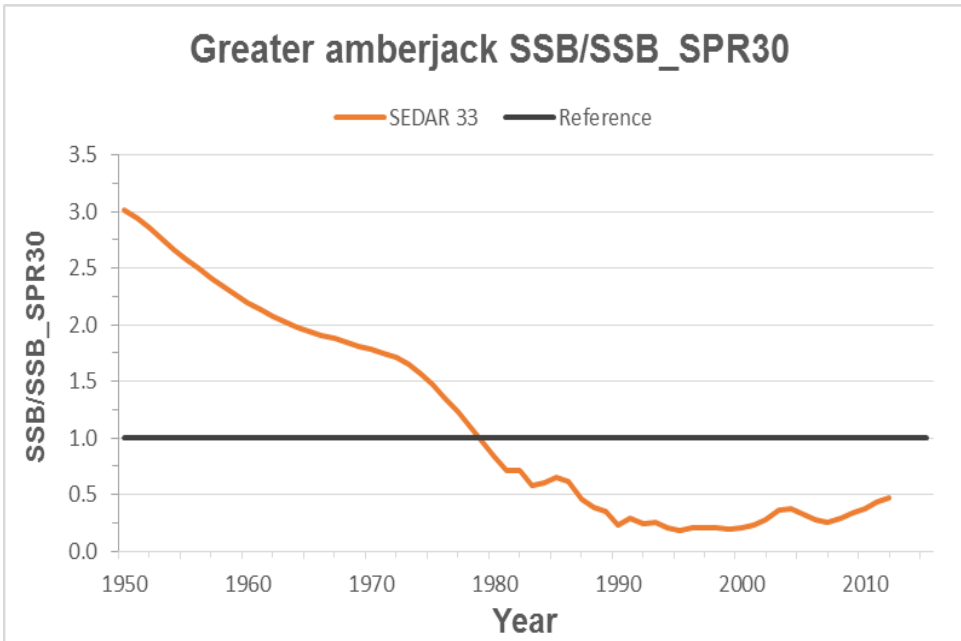
Birmingham, AL

# Greater Amberjack – Update Assessment Summary

- Assessment conducted by the SEFSC
- Summary of results and SSC catch advice
- Discussion of factors contributing to changes of stock status from SEDAR 33 update assessment

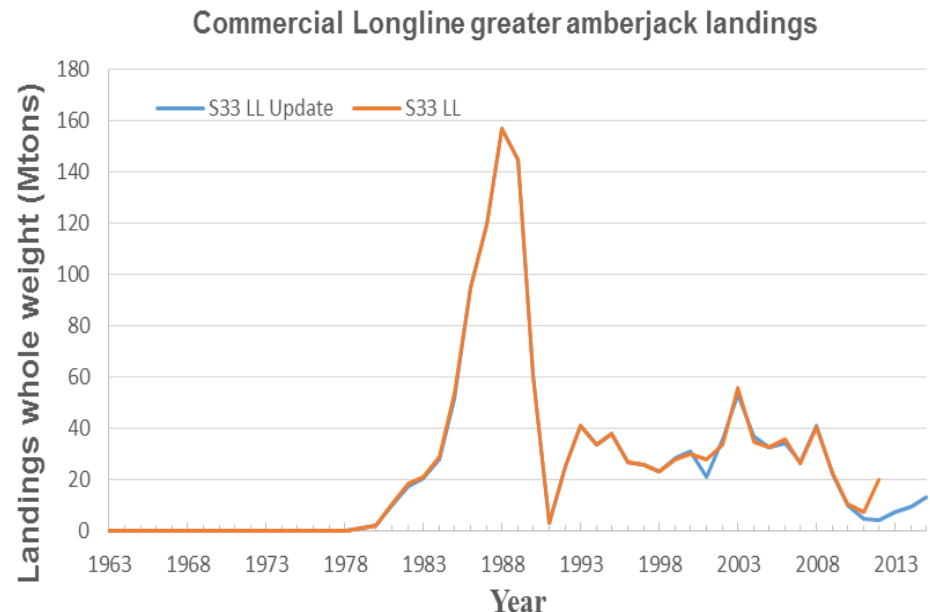
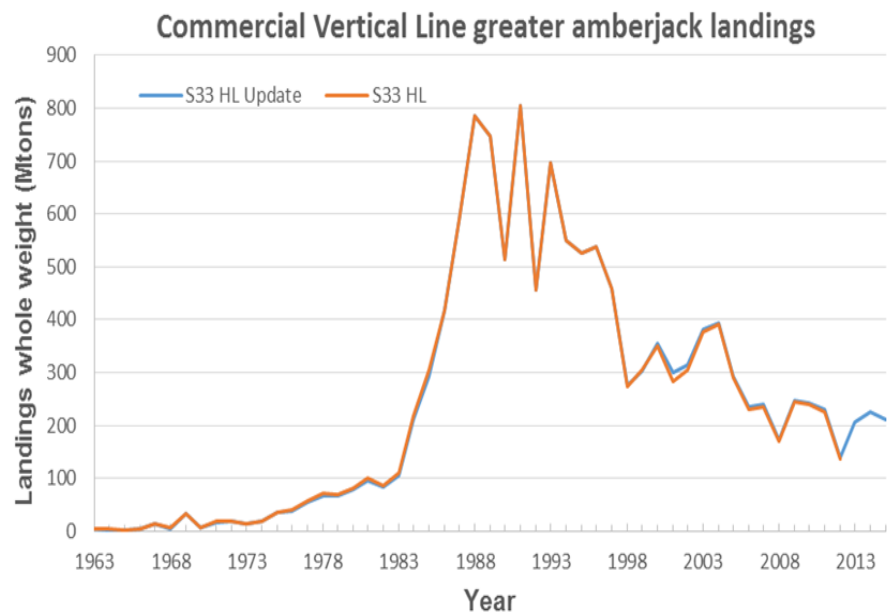


# Main SEDAR 33 GAJ benchmark assessment outcomes



Gulf of Mexico GAJ stock still overfished (failed to rebuild), and undergoing overfishing

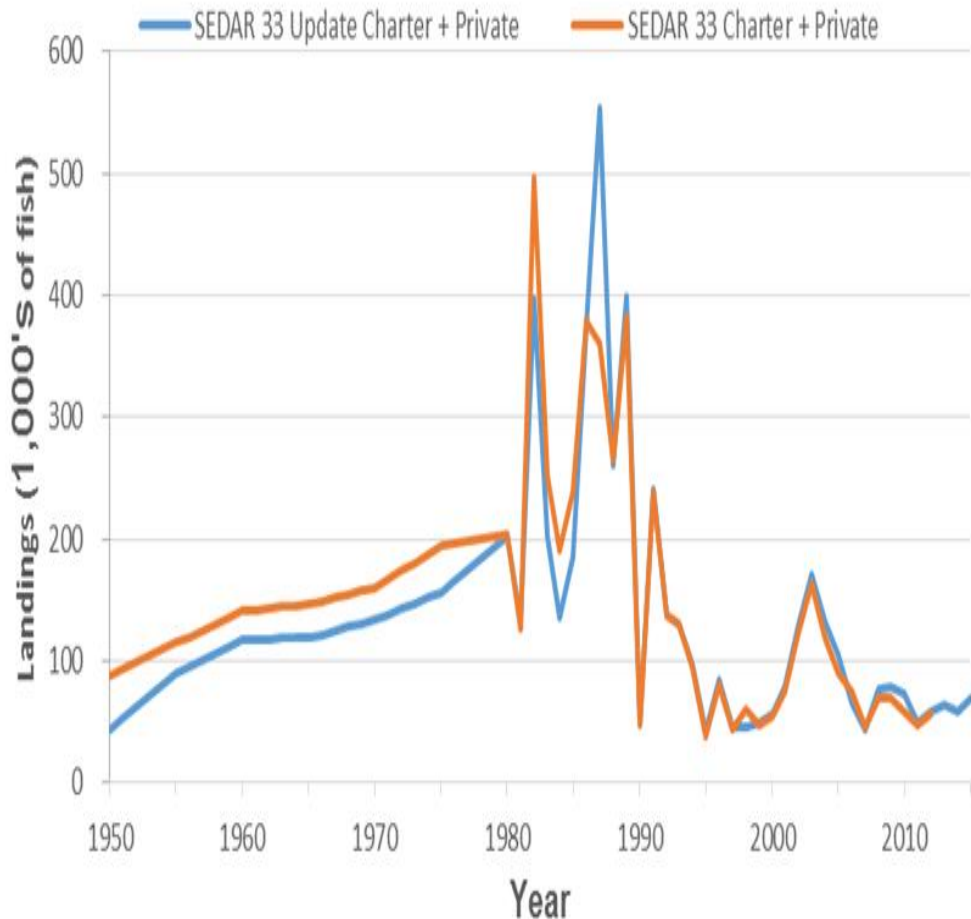
# Data updates: Commercial landings



- Units are: whole weight (ww, Mtons)
- Data nearly identical for commercial vertical line
- Commercial longline slightly changed for year 2002
- Landings from longline fleet ~ 9% of all commercial landings

# Data updates: Charter and Private angler (REC) fleet landings

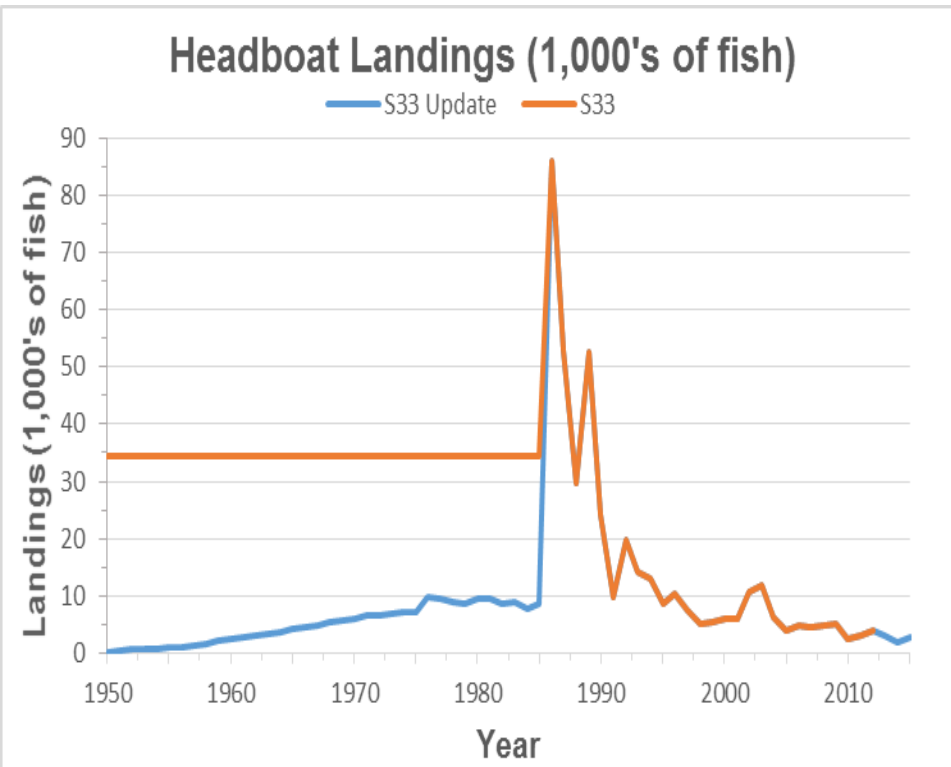
Recreational Greater amberjack Charterboat and Private angler landings (REC fleet)



SEDAR 33 vs SEDAR 33 update differences due to:

1. All Years:  
Estimates for hind cast period changed due to application of SEDAR Best Practices (2015) after SEDAR 33
2. Post 1980:
  - Post stratified 1987 estimates were corrected for error identified in 2015
  - New approach to removal of Monroe County (FL)
  - Calibration of APAIS to MRIP/MRFFS

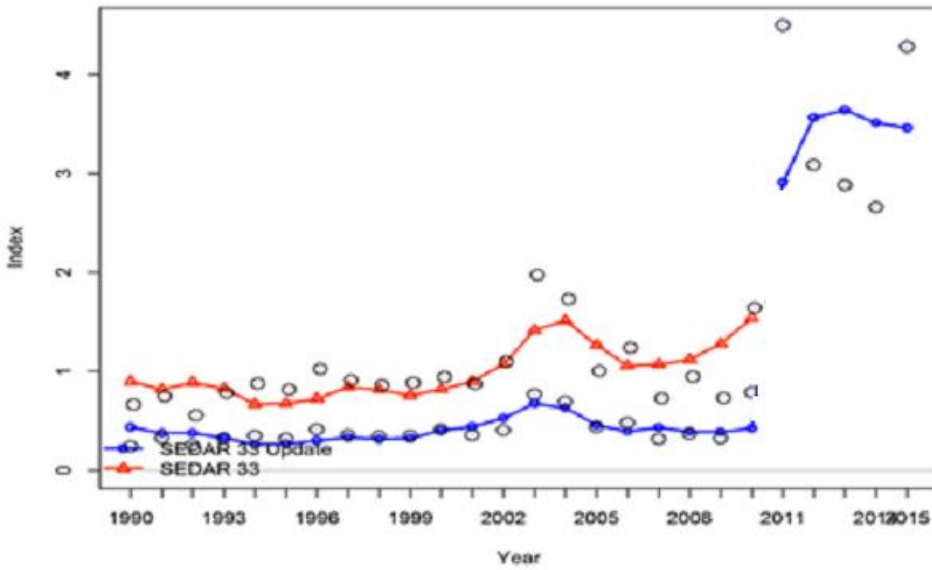
# Data updates: Headboat landings



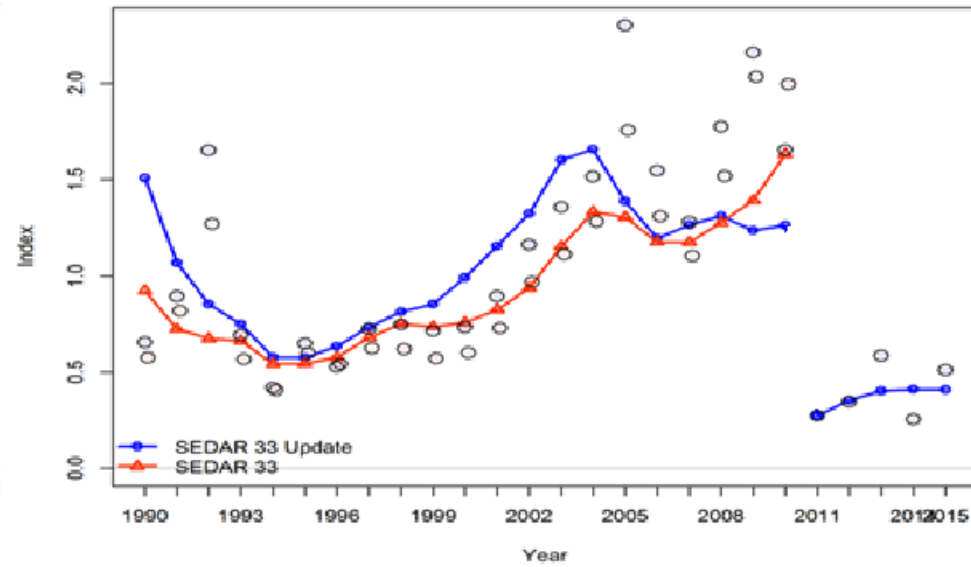
- Recent period Headboat fleet landings estimates unchanged
- SEDAR 33 vs SEDAR 33 update hind cast period differences due to application of SEDAR Best Practices (2015) after SEDAR 33
- Recommend to revisit SEDAR Best Practices decision regarding headboat fleet catches in historic period

# Fits to indices

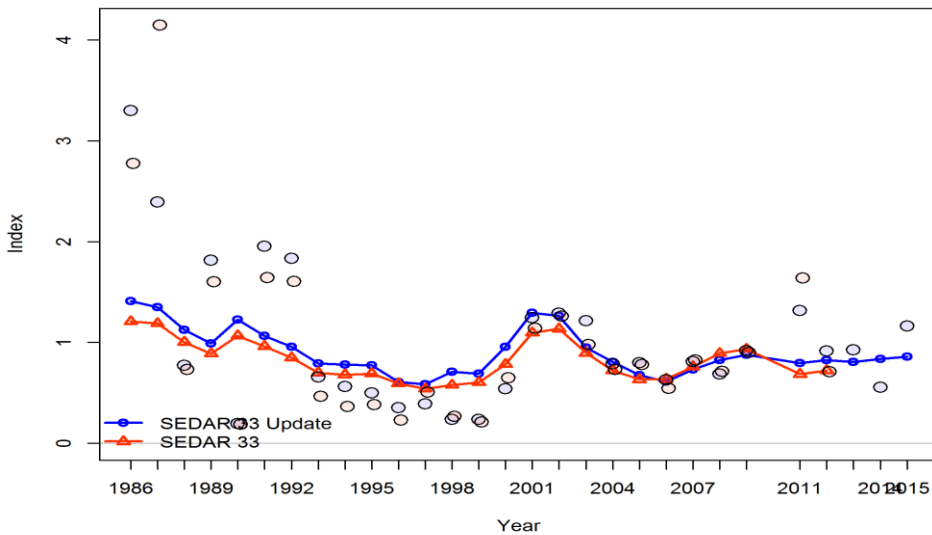
## Com\_HL



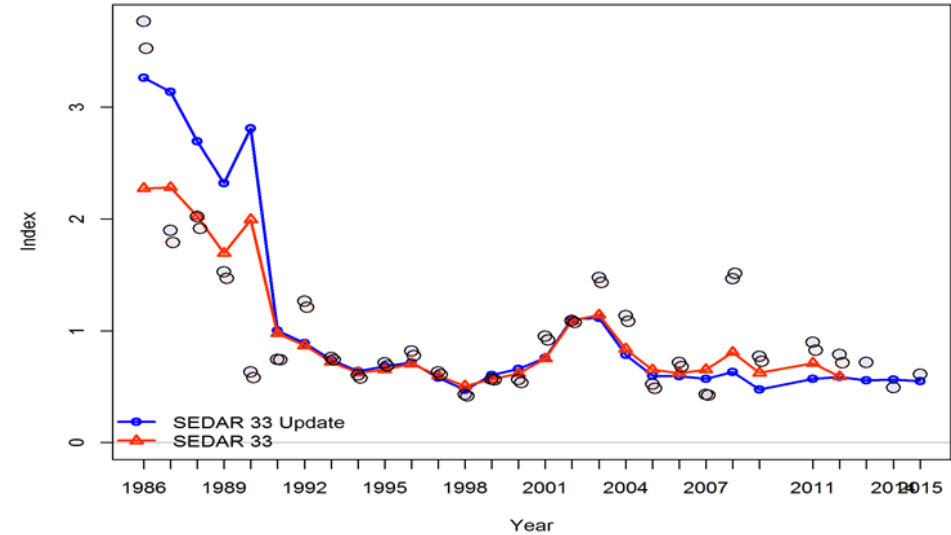
## Com\_LL



## REC survey

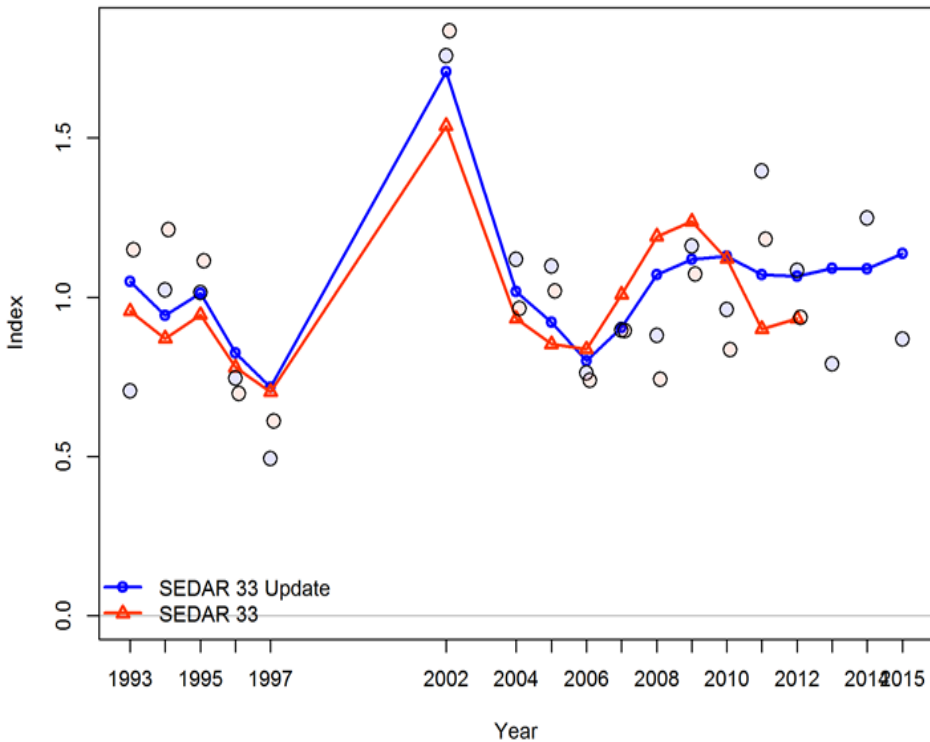


## Headboat

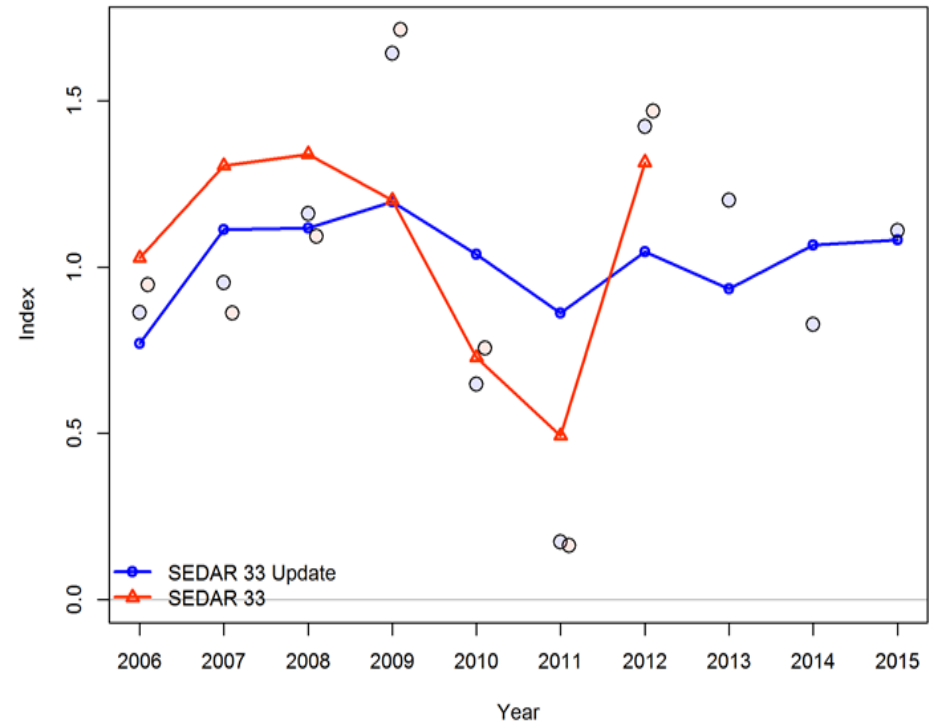


# Fits to Survey indices

## SEAMAP Video

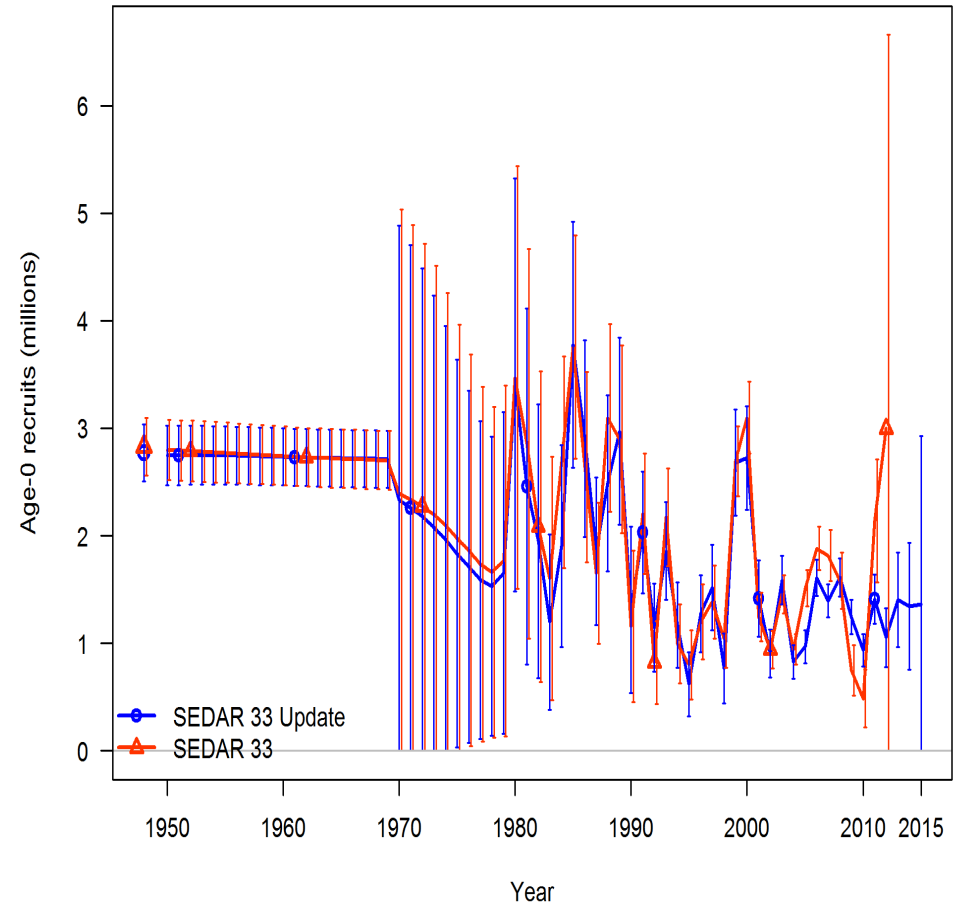
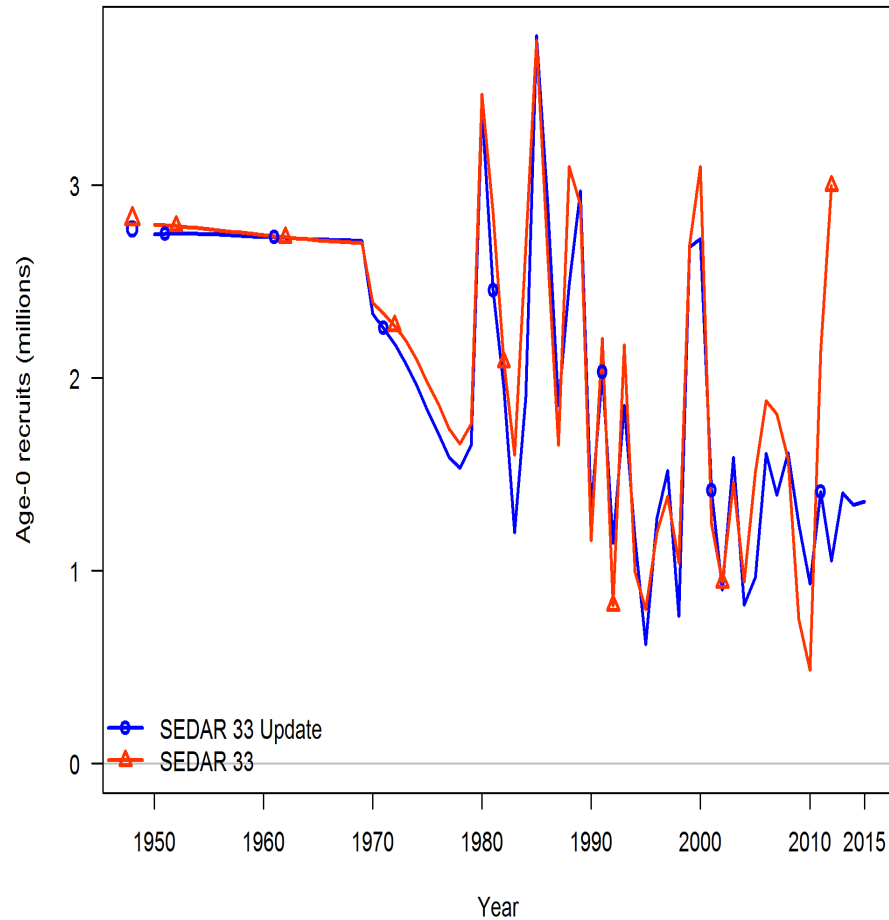


## Panama City Video



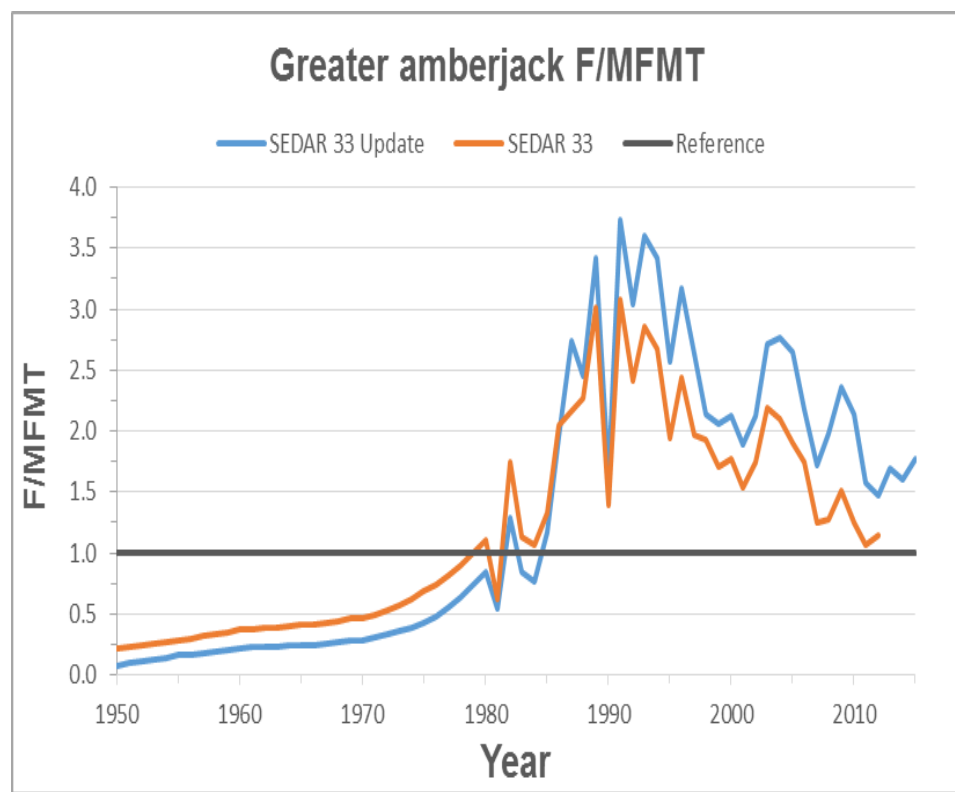
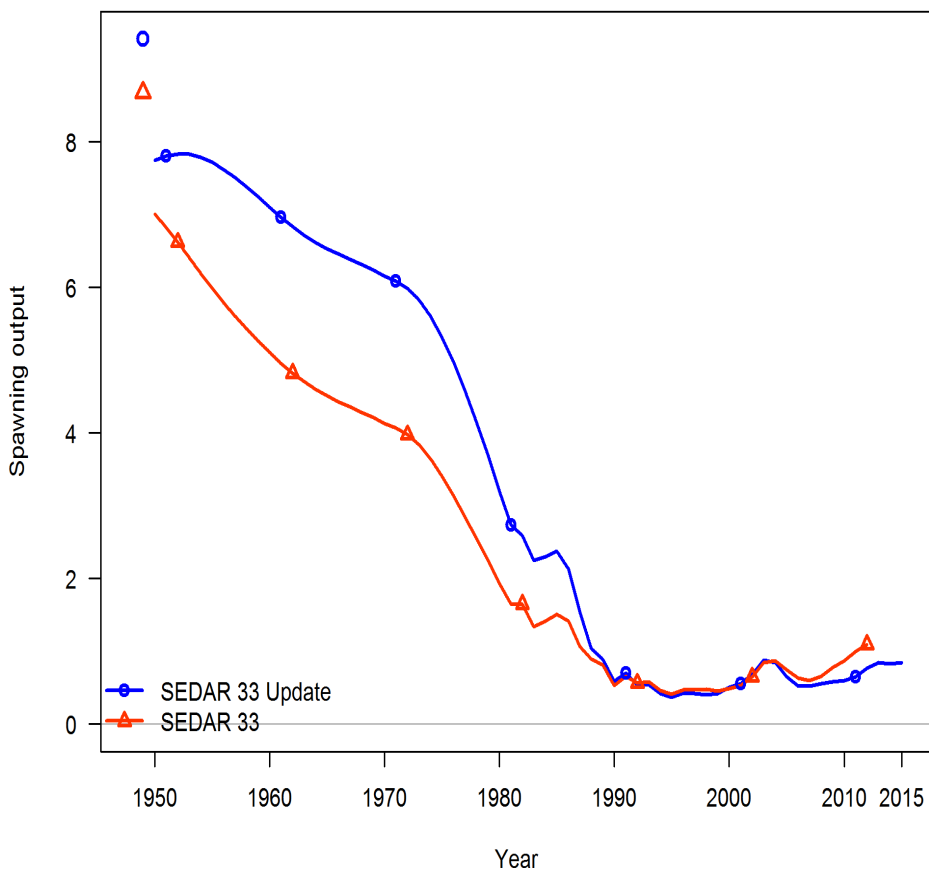


# Age 0 recruits and recruit deviations



- SEDAR 33 update predicting lower recruitment than the benchmark in most years
- Since ~ 1999 recruitment mostly flat except aberrant increasing estimate in 2000 for both models and 2010 for SEDAR 33

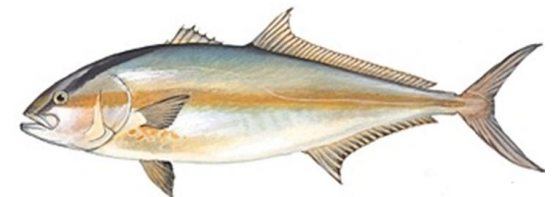
# Trends in SS update model results



# Greater Amberjack – SEDAR 33 Update Assessment Results

Motion: The SSC recommends yield at  $F_{SPR30\%}$  for OFL and ABC as yield 75% of  $F_{SPR30}$  for the years 2018-2020 for GOM Greater Amberjack as reported in Table 7 of the SEDAR 33 Stock Assessment update.

Year	OFL	ABC
2018	1.500	1.182
2019	1.836	1.489
2020	2.167	1.794



# Factors Contributing to Update Model Having More Negative Perception of Stock Status

- Harvest overages relative to management targets (ACLs) during recent years
- Discord between indices (SEDAR 33)
- Discord in SEDAR 33 projected estimated indices and observed indices in SEDAR 33 update for 2012-2015
- Discord in SS estimated composition (length, age) SEDAR 33 predicted and observed in SEDAR 33 update
- Recruitment estimates

