



**NOAA**  
**FISHERIES**

Southeast  
Regional  
Office

# Season Length Projections: Gulf Red Snapper



# 2016 Preliminary Landings

Mode	Jan-Feb	Mar-Apr	May-June	July-Aug	Sept-Oct	Nov-Dec	TOTAL	% Quota	% ACL
Private + State Charter	185,877	95,737	3,485,444	810,659	420,925	189,259	5,187,901	125	102
Federal For-Hire	48,510	18,872	1,401,828	654,174	1,929	8,692	2,134,005	70	

Preliminary estimate of overage = **129,906** lb ww for the Private Angler component

# Why the overage?

Median error on projected federal catch rates:

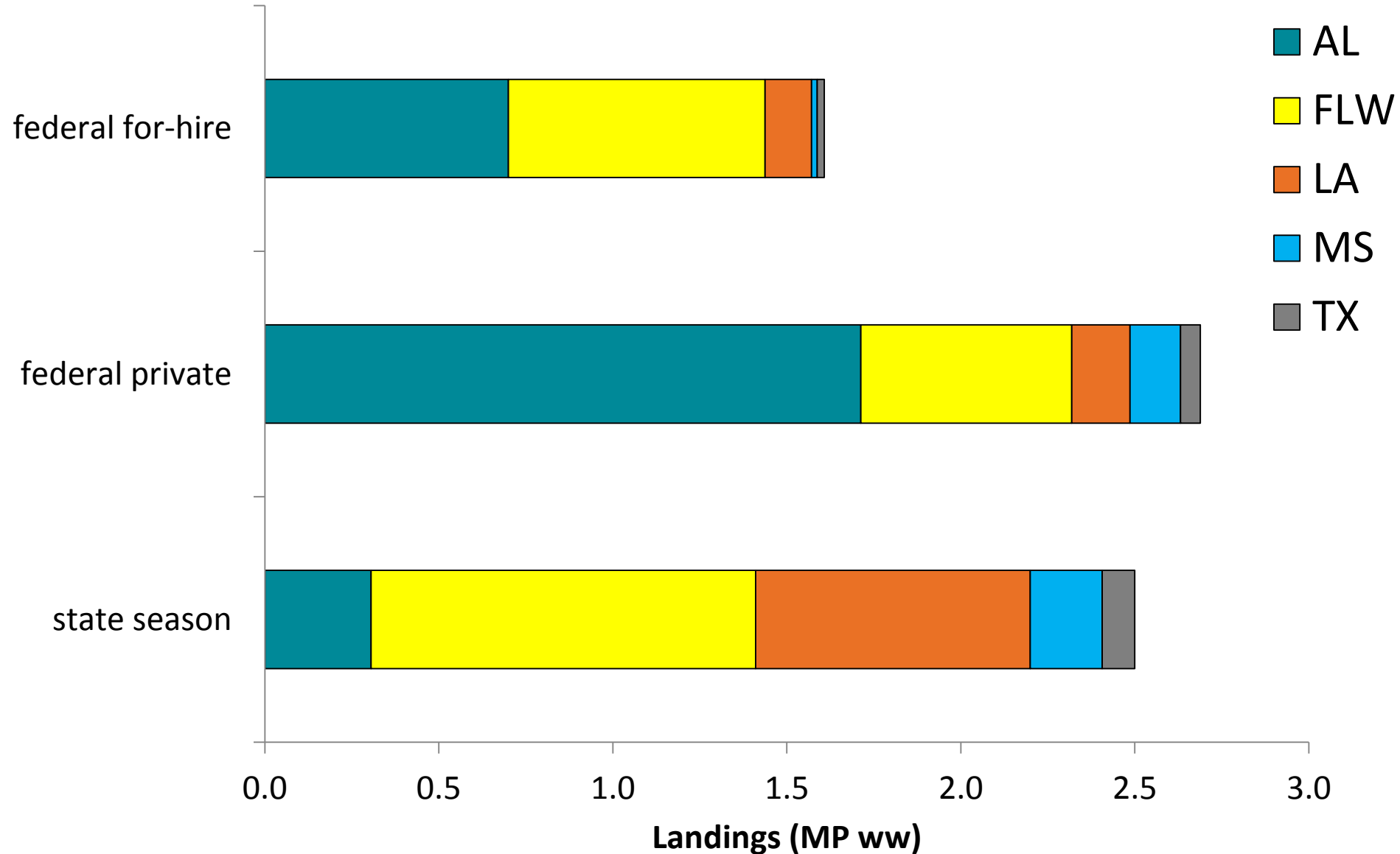
- Private Angler : -4% (**slight underestimate**)
- Federal For-Hire : 10% (**overestimate**)

State catches higher than anticipated:

- Extension of state boundaries (3→9 nmi)
- Extension of AL and FL seasons after federal season announcement

**CONCLUSION:** Overage due to slight underestimate of federal private catch rate coupled with underestimates of the impact of the state boundary extension, two states having longer seasons than anticipated, and one state managing toward ACL instead of ACT.

# 2016 Gulf of Mexico Red Snapper Landings (Recreational)



# Preliminary 2017 Quotas

**Gulf-wide ACL = 6,602,694 pounds whole weight\***

<b>Component</b>	<b>Annual Catch Target</b>
All Rec	5,282,155**
Private Angler	3,047,803**
Federal For-Hire	2,234,352

*\*Based on 49% allocation (Reef Fish Amendment 28 legal decision)*

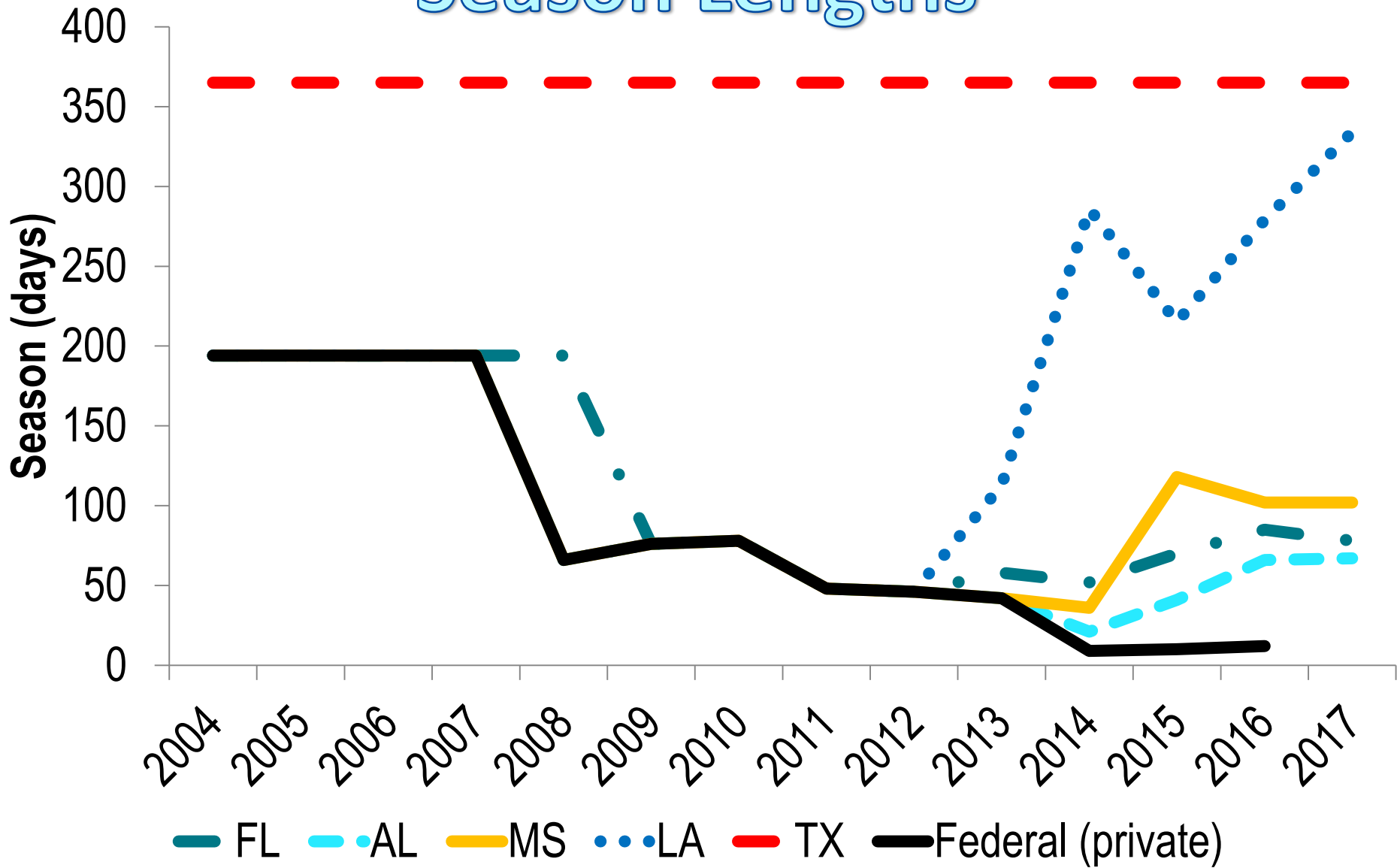
*\*\*Includes 129,906 lb ww payback (Private Angler Component)*

# 2017 State Seasons (Preliminary)

Season (days)		Details
FL	78	Open Sat/Sun starting the first Saturday in May, then opening continuously starting the Saturday before Memorial Day through the Sunday following Independence Day, then reopening Fri/Sat/Sun in September and October, plus Labor Day
AL	67	Open May 26 through July 31
MS	102	Open May 26 to September 9
LA	≤334	Opened Feb 1, may close when 'quota' of 1,021,614 lb ww caught (based on 18.41% PVT quota and 11.6% of FFH quota)
TX	365	Open year-round, 4-fish bag limit in state waters, 15" min. size limit

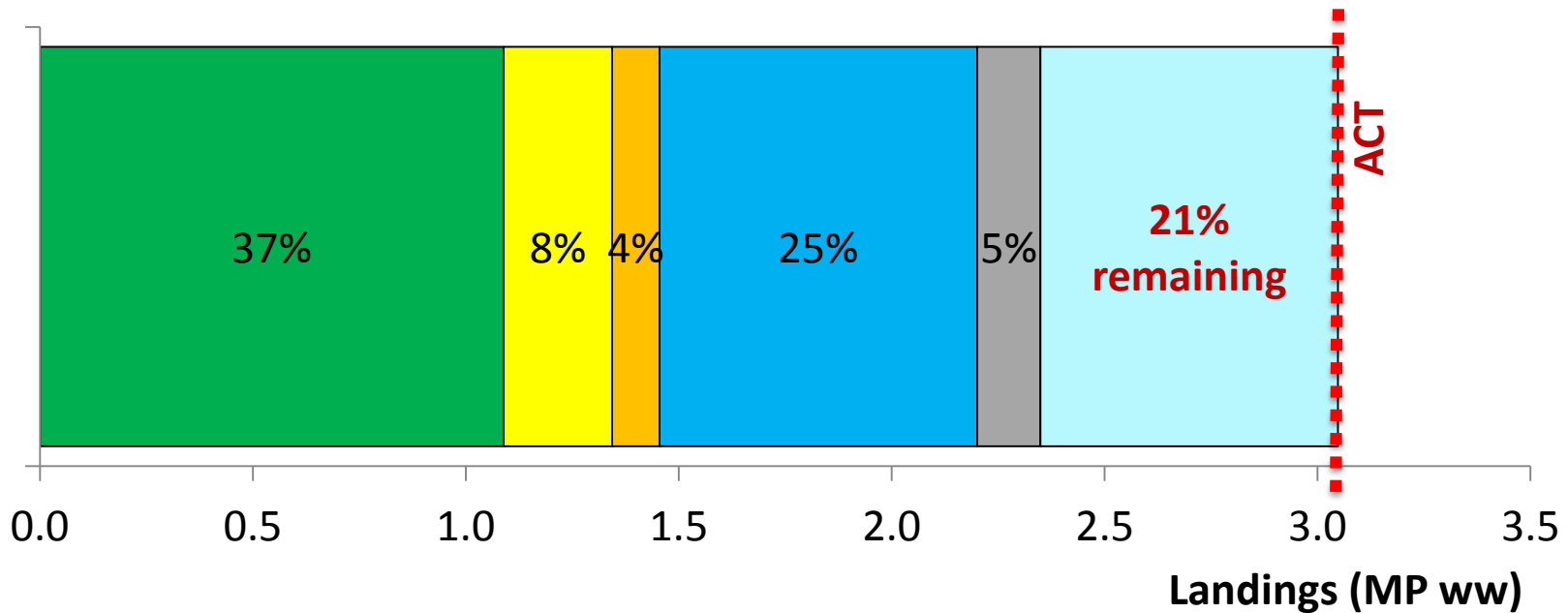
**Note: Seasons for FL and MS have not been finalized; AL, MS, and LA state water boundaries were extended in 2016 from 3 to 9 nautical miles**

# Season Lengths



# Projected State Season Catches

■ FL ■ AL ■ MS ■ LA ■ TX ■ Federal



In 2017, state seasons projected to catch **77-79%** of the ACT, leaving **~0.7 MP** for the private federal season.

In 2016, federal for-hire caught 88% of ACT. In 2017, FFH quota reduced ~2% by RF-28 legal decision.

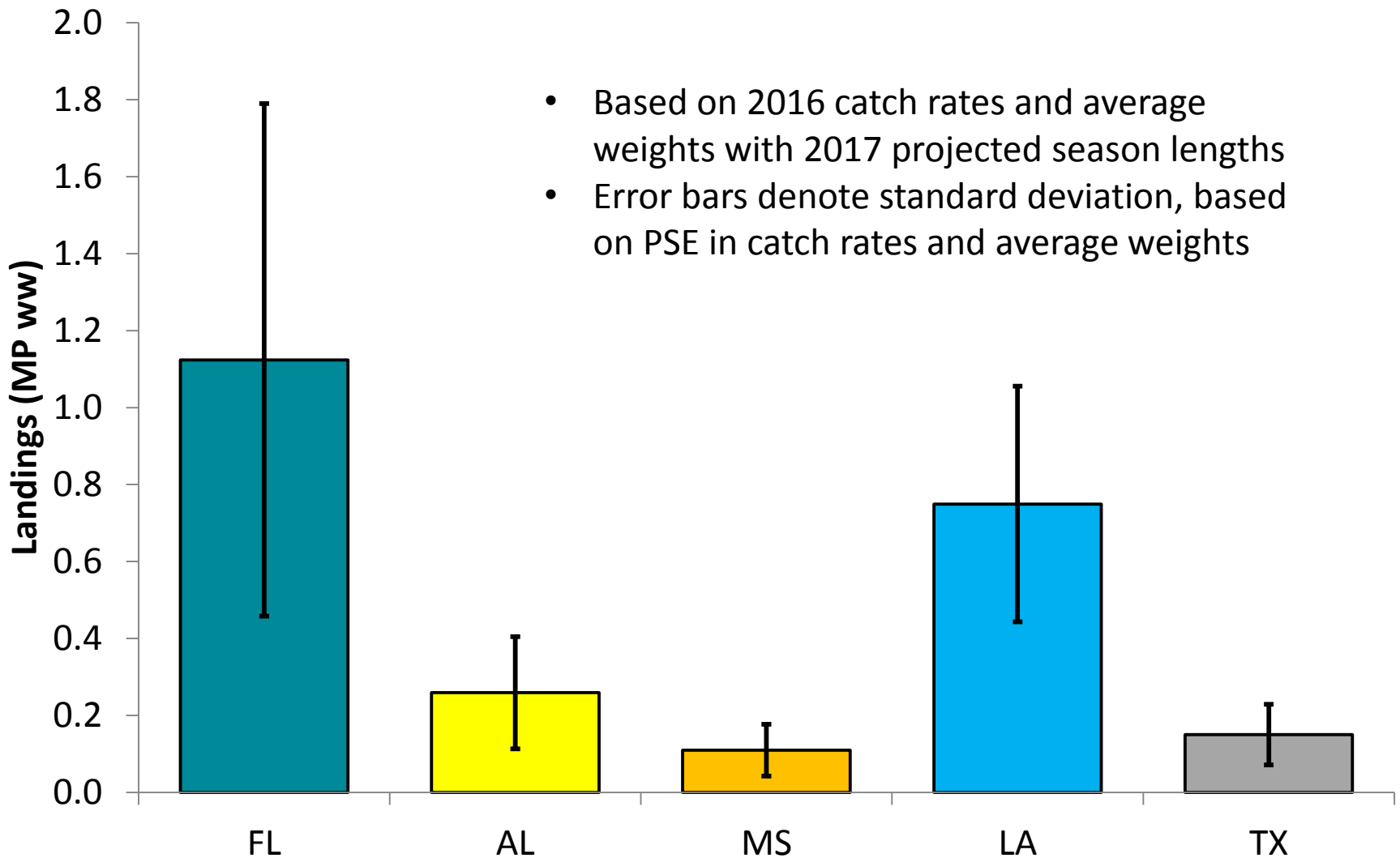


# QUESTIONS?



Image © D. Rainer (AL-DNR)

# Uncertainty in State Season Catches



- Based on 2016 catch rates and average weights with 2017 projected season lengths
- Error bars denote standard deviation, based on PSE in catch rates and average weights